

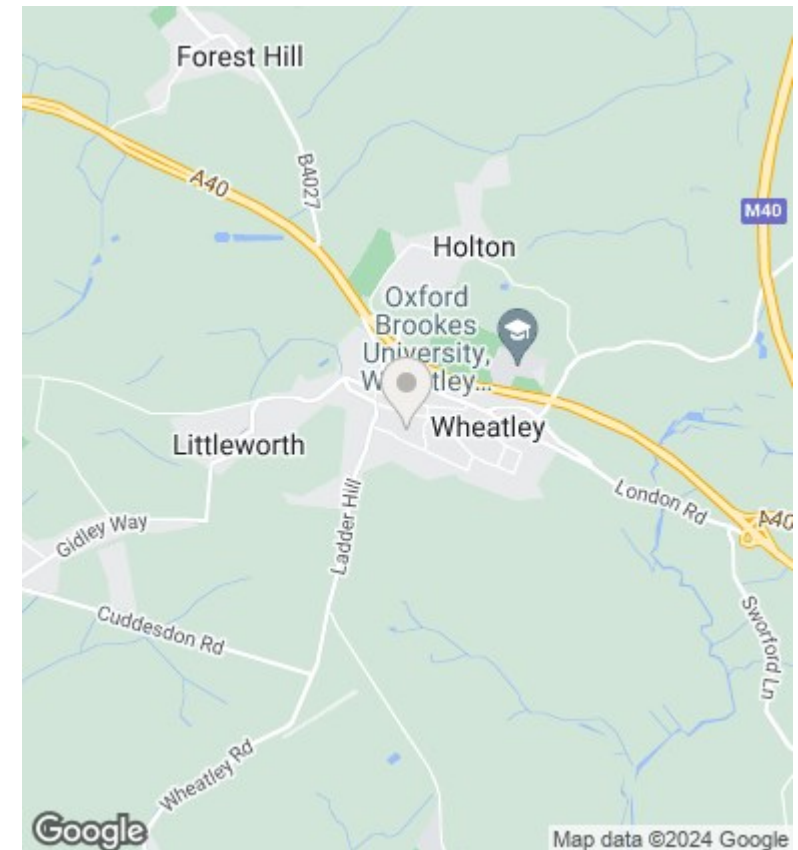
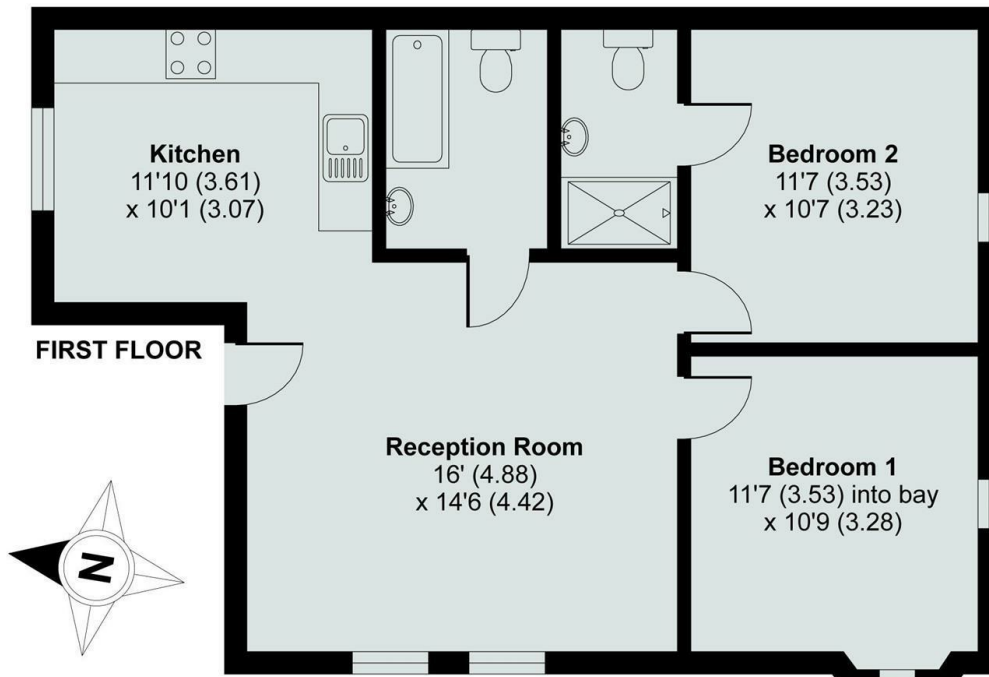


## 95a High Street, Wheatley, OX33 1XP

£1,395 PCM - 15th June 2024.

- Two double bedrooms
- Gas CH
- On street parking (please check restrictions)
- Mains gas, electricity and water
- First Floor apartment
- Unfurnished with integrated appliances
- EPC rating C
- Located in village centre
- Ensuite shower room
- Council Tax Band B

APPROX. GROSS INTERNAL FLOOR AREA 704 SQ FT 65.4 SQ METRES



### Directions

### Viewings

Viewings by arrangement only. Call 01865 515900 to make an appointment.

### Council Tax Band

B

### EPC Rating:

C

Energy Efficiency Rating		Current	Potential
<i>Very energy efficient - lower running costs</i>			
(92 plus) <b>A</b>			
(81-91) <b>B</b>		80	80
(69-80) <b>C</b>			
(55-68) <b>D</b>			
(39-54) <b>E</b>			
(21-38) <b>F</b>			
(1-20) <b>G</b>			
<i>Not energy efficient - higher running costs</i>			
<b>England &amp; Wales</b>		EU Directive 2002/91/EC	