

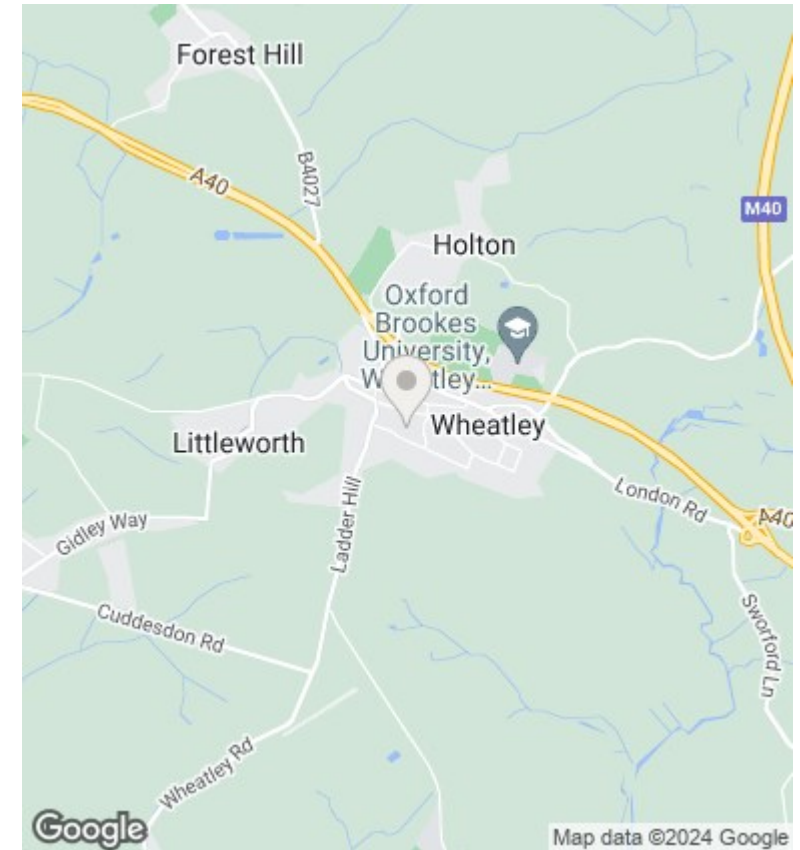
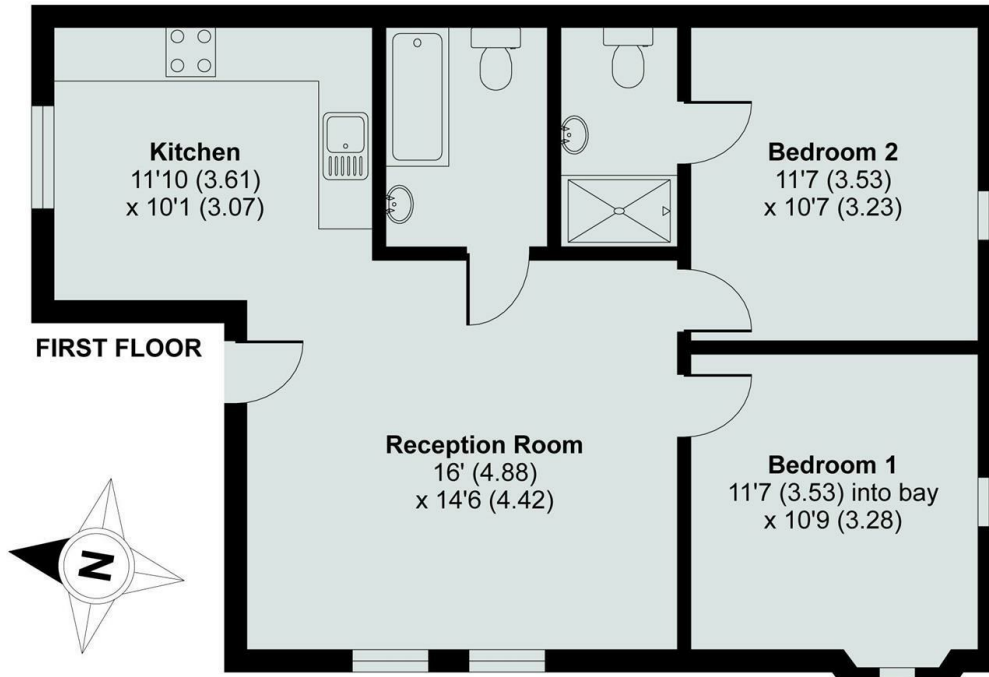


95a High Street, Wheatley, OX33 1XP

£1,395 PCM - 15th June 2024.

- Two double bedrooms
- Gas CH
- On street parking (please check restrictions)
- Mains gas, electricity and water
- First Floor apartment
- Unfurnished with integrated appliances
- EPC rating C
- Located in village centre
- Ensuite shower room
- Council Tax Band B

APPROX. GROSS INTERNAL FLOOR AREA 704 SQ FT 65.4 SQ METRES



Directions

Viewings

Viewings by arrangement only. Call 01865 515900 to make an appointment.

Council Tax Band

B

EPC Rating:

C

Energy Efficiency Rating		Current	Potential
<i>Very energy efficient - lower running costs</i>			
(92 plus) A			
(81-91) B		80	80
(69-80) C			
(55-68) D			
(39-54) E			
(21-38) F			
(1-20) G			
<i>Not energy efficient - higher running costs</i>			
England & Wales		EU Directive 2002/91/EC	