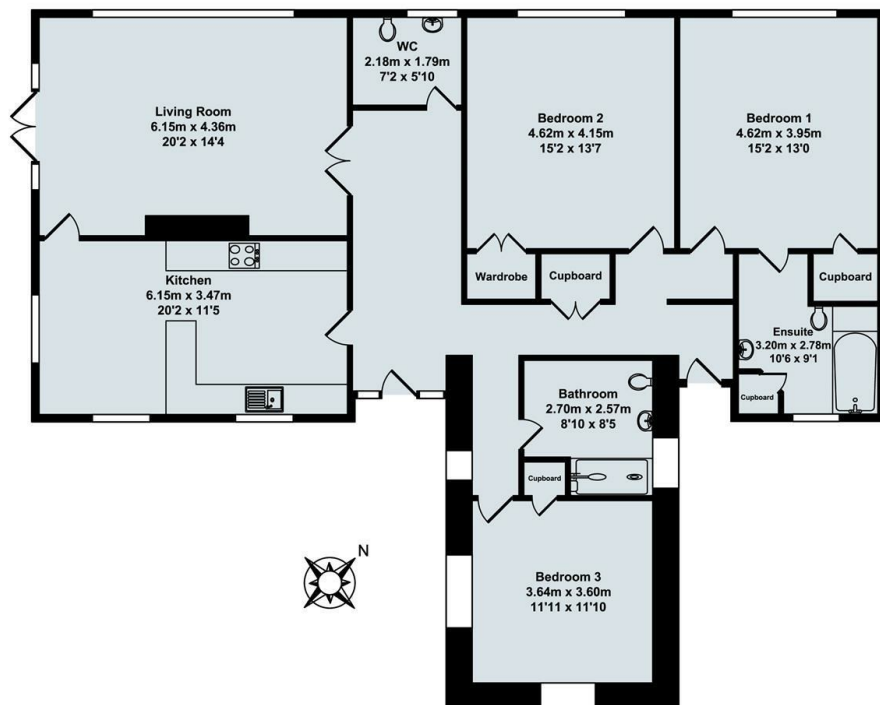




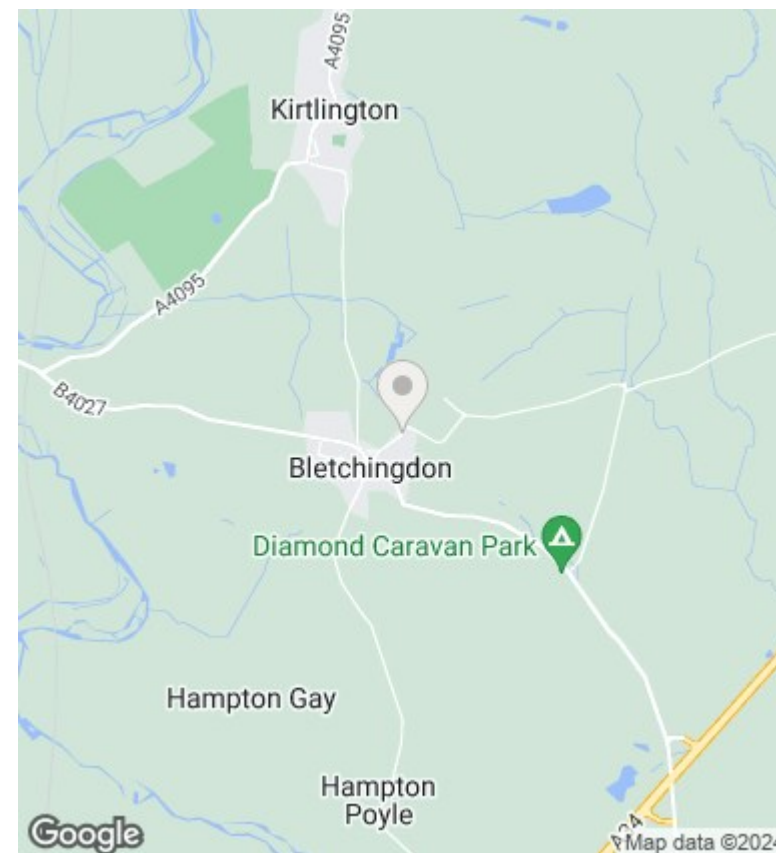
## The Bothy, Weston Road, Bletchingdon, Kidlington, OX5 3DH

£2,500 PCM - 1st October 2023.

- Single storey period property
- Two bathrooms
- Council Tax Band F
- Exceptionally spacious
- Large gardens
- Three bedrooms
- AWAITING EPC



Total Approx. Floor Area 149.56 Sq.M. (1610 Sq.Ft.)



## Directions

## Viewings

Viewings by arrangement only. Call 01865 515900 to make an appointment.

## Council Tax Band

F

## EPC Rating:

D

Energy Efficiency Rating		Current	Potential
<i>Very energy efficient - lower running costs</i>			
(92 plus)	A		
(81-91)	B		
(69-80)	C	65	69
(55-68)	D		
(39-54)	E		
(21-38)	F		
(1-20)	G		
<i>Not energy efficient - higher running costs</i>			
<b>England &amp; Wales</b>		EU Directive 2002/91/EC	