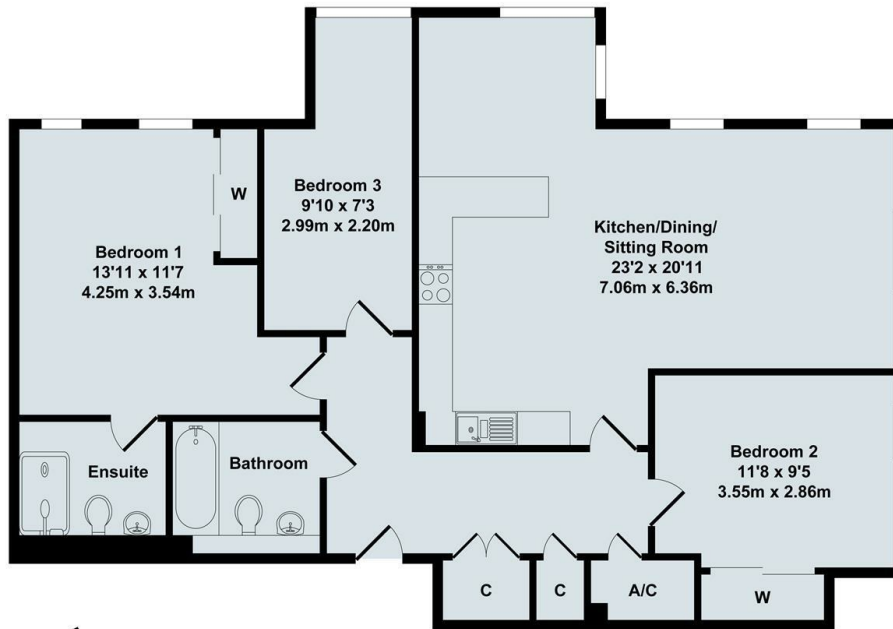




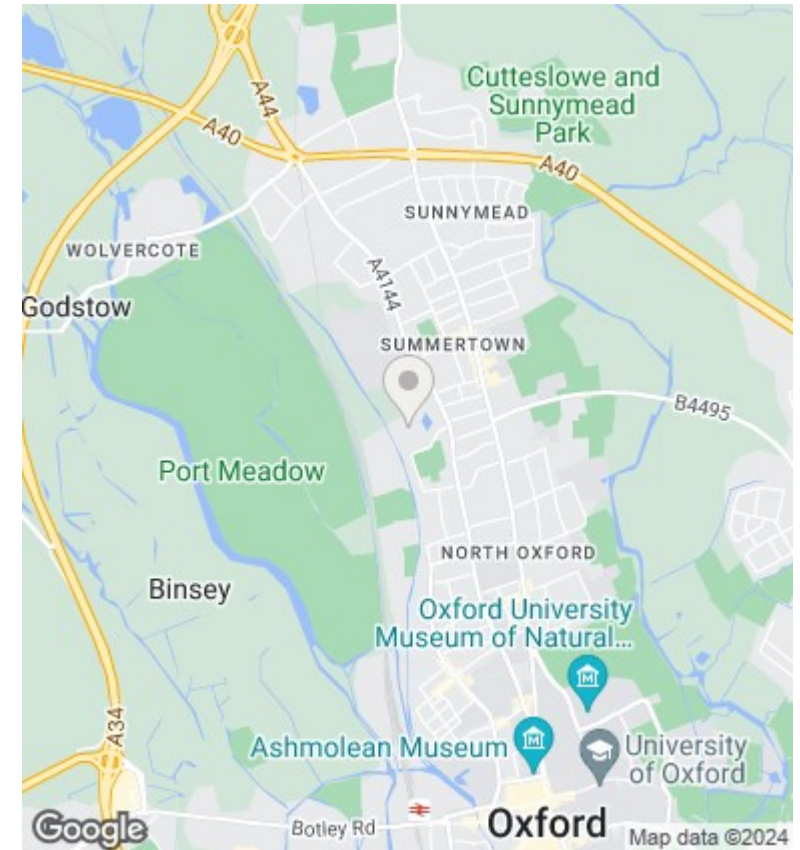
## 6 Elizabeth Jennings Way, Waterways, Oxford, OX2 7BN

£2,300 PCM

- 1 BATHROOMS
- FLAT
- ONE ALLOCATED PARKING SPACE
- 3 BEDROOMS
- COMMUNAL GARDEN
- COUNCIL TAX BAND E
- 1 RECEPTIONS
- MAINS ELECTRIC AND WATER - NO GAS
- EPC - BAND C



Total Approx. Floor Area 1020 Sq.Ft. (94.80 Sq.M.)  
All items illustrated on this plan are included in the "Total Approx Floor Area"



## Directions

## Viewings

Viewings by arrangement only. Call 01865 515900 to make an appointment.

## Council Tax Band

E

## EPC Rating:

C

Energy Efficiency Rating		Current	Potential
<i>Very energy efficient - lower running costs</i>			
(92 plus)	A		
(81-91)	B		80
(69-80)	C	70	
(55-68)	D		
(39-54)	E		
(21-38)	F		
(1-20)	G		
<i>Not energy efficient - higher running costs</i>			
<b>England &amp; Wales</b>		EU Directive 2002/91/EC	