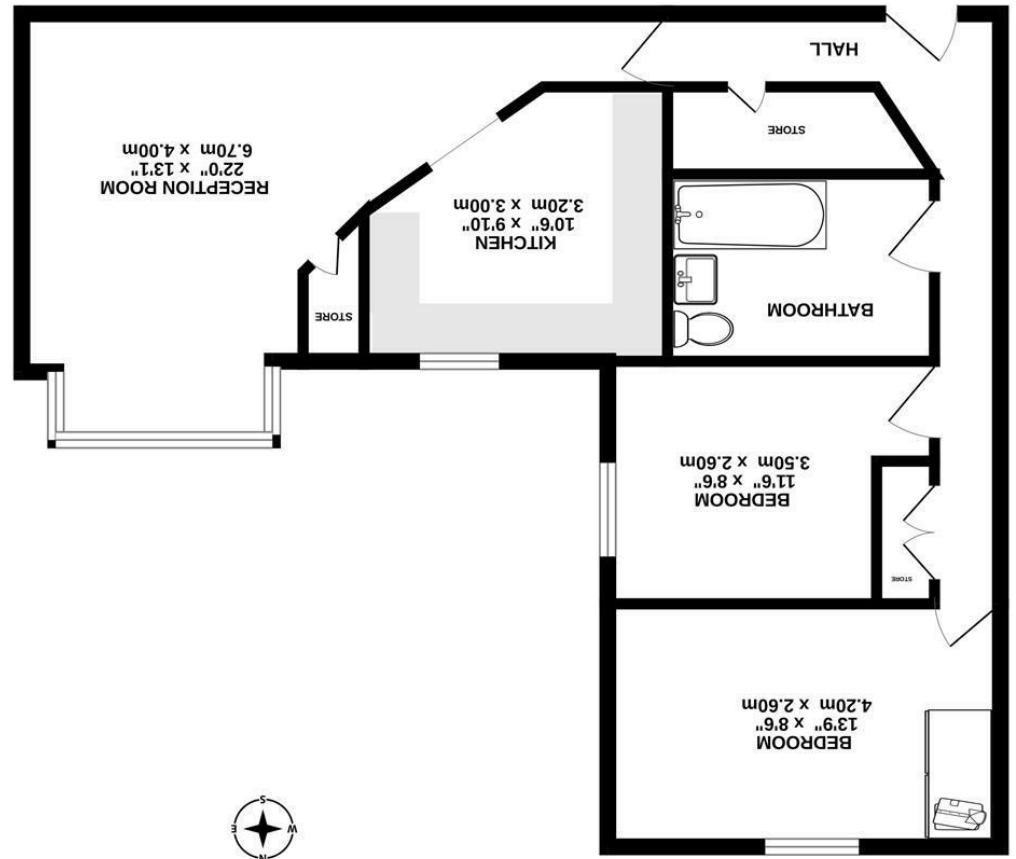


Whilst every attempt has been made to ensure the accuracy of the floorplan contained herein, measurements of rooms, windows, doors and any other areas are approximate and no responsibility is taken for any error, omission or mis-statement. This plan is for illustrative purposes only and should be used as such by any prospective purchaser. The services, systems and appliances shown have not been tested and no guarantee as to their quality or efficiency can be given. Made with Metropix (2022)



FIRST FLOOR 675 sq.ft. (62.7 sq.m.) approx.

## Brennan Ayre O'Neill

Estate Agents | Surveyors | Property Managers

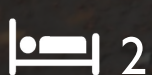


Yewdale Park, Prenton CH43 5XD

Guide Price

0151 608 8586

prenton@b-a-o.com



£127,500

377 Woodchurch Road, Prenton, Wirral,

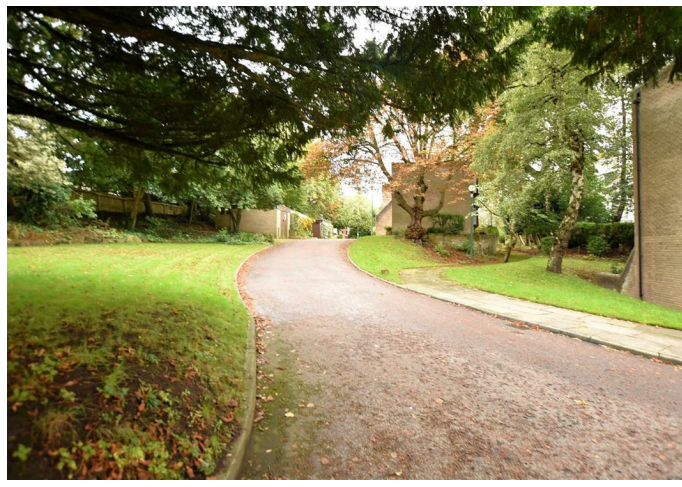
www.b-a-o.com

Other features to look out for : the deep double glazed window seat to this spacious living room, together with the seasonal view from here over to the two Liverpool Cathedrals in the distance. Please also note that this property sale comes absolutely chain free. Take comfort too that these apartments may not be let out; all your to be neighbours are home owners.

Nor should we ignore the Yewdale Park's central position within the village; peaceful and easily accessible. So accessible in fact, it's just a short stroll to the village shops.

TENURE: Lease remaining 962 years - Monthly Maintenance Charge is £110 which includes the secure covered parking - Please make sure to have your solicitor check the details of the lease prior to exchange of contracts.

For your directions please sat nav: CH43 5XD



These particulars, whilst believed to be accurate are set out as a general outline only for guidance and do not constitute and part of an offer or contract. Intending purchasers should not rely on them as statements or representation of fact, but must satisfy themselves by inspection or otherwise as to their accuracy. No person in this firm's employment has the authority to make or give any representation or warranty in respect of this property. We have not tested any services nor appliances and cannot give any assurances or warranties as to their condition or reliability. All measurements are approximate having been taken with an electronic measuring device.

