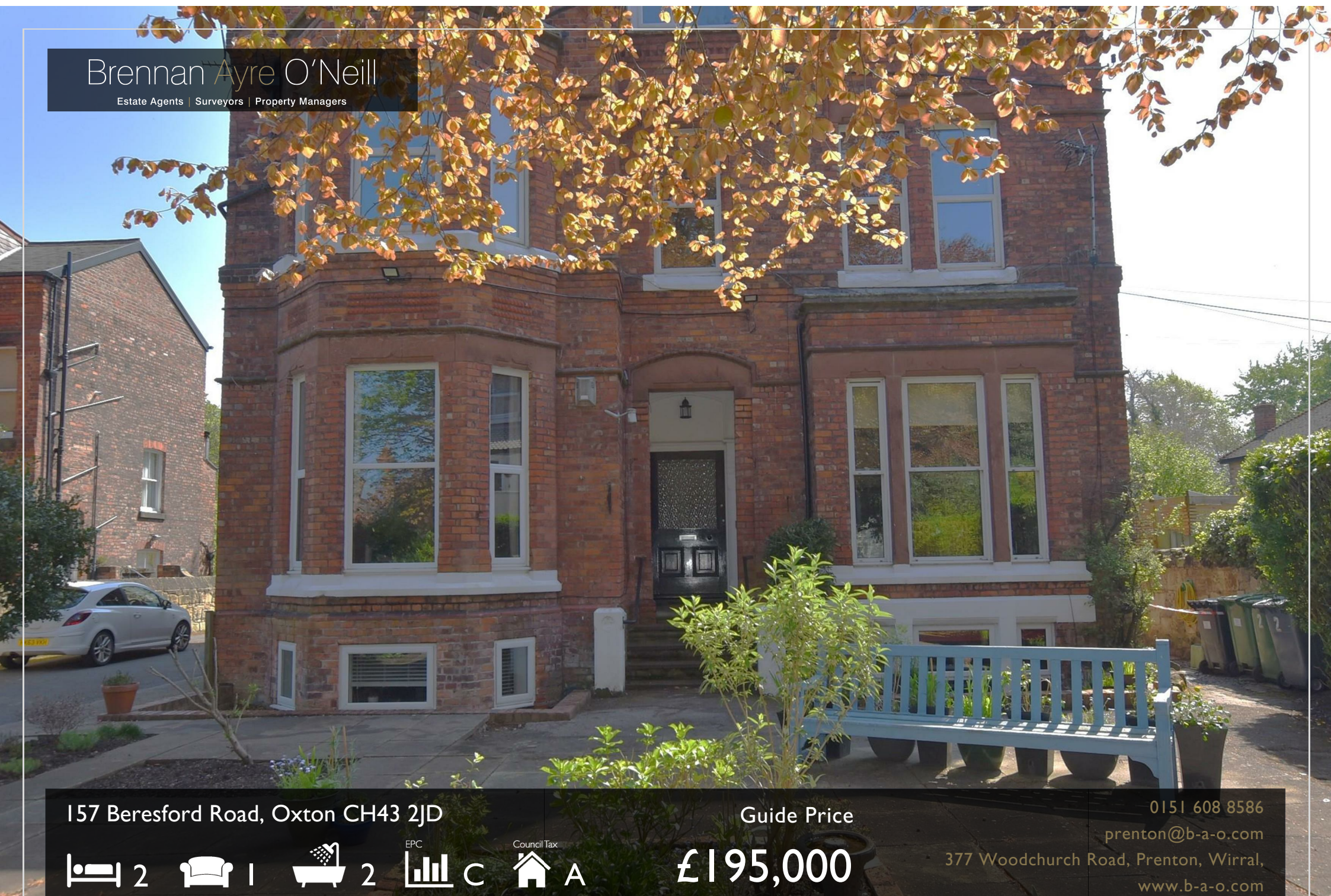
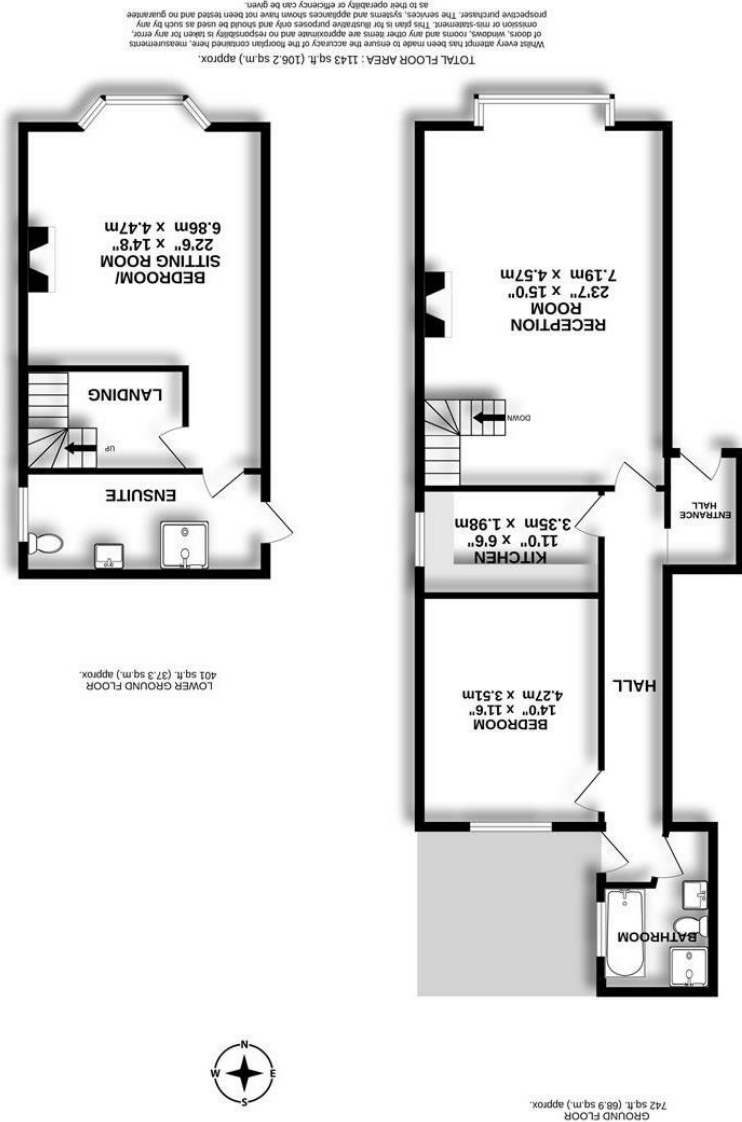


Brennan Ayre O'Neill



Adjacent to this room is a separate kitchen, not huge, but for a chef very practical, we would say. And of course there may always possibly be the option of remodeling the layout (subject to lease and building regs approval) of opening the kitchen into the rear second 'double' bedroom.

That second double bedroom also has a smart shower room just across the hall (wood block floored) - not quite en suite facilities but as nearest to it as can be.

So, and in conclusion, this is a beautiful split level apartment; an apartment for which it's main entrance, shared by one other, is via the original front door to this Victorian property - a pleasantly grand entrance you may say; (the remaining four apartments have access to the rear) - An apartment that offers two very generous bedroom sizes but also offers versatile accommodation. An apartment with two shower rooms too. And for many, most importantly perhaps, it comes with its own outdoor space - not huge, however certainly enough for a table and chairs and or a sun-lounger to appreciate its south facing aspect.

Just as important is this apartment's location, standing at the top end of Beresford Road; opposite The Church Of The Holy Name and Birkenhead School. That makes a walk to the bus stop a minute or two away, along Bidston Road and a ten to fifteen minute walk into Oxtown village. For directions please Sat Nav: CH43 2JD

Tenure
The property is leasehold on a remainder of a 999 years lease from 1991. Current service charges are £150 per month.



These particulars, whilst believed to be accurate are set out as a general outline only for guidance and do not constitute and part of an offer or contract. Intending purchasers should not rely on them as statements or representation of fact, but must satisfy themselves by inspection or otherwise as to their accuracy. No person in this firm's employment has the authority to make or give any representation or warranty in respect of this property. We have not tested any services nor appliances and cannot give any assurances or warranties as to their condition or reliability. All measurements are approximate having been taken with an electronic measuring device.

