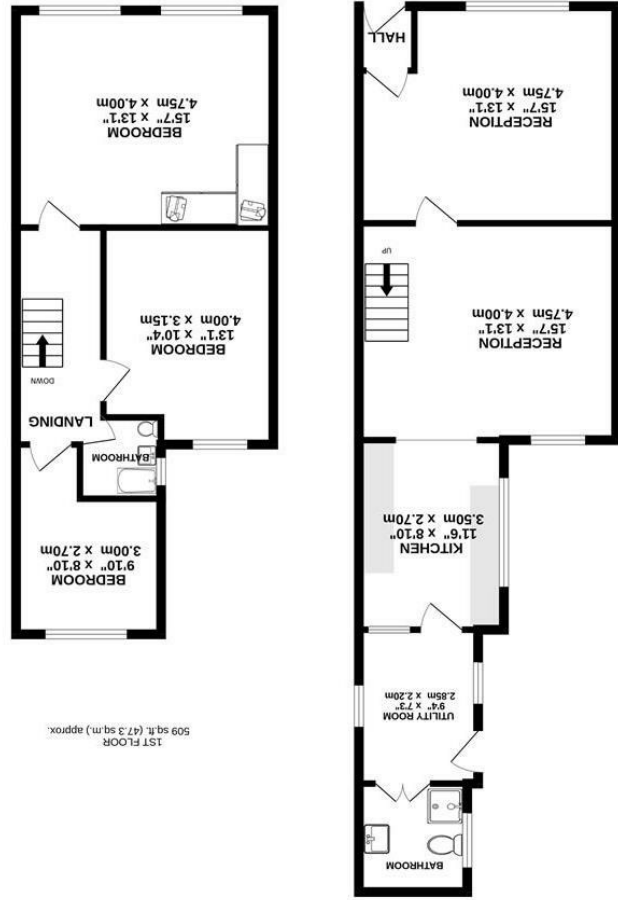




What every attempt has been made to ensure the accuracy of the floorplans contained here, measurements of doors, windows, rooms and any other features are given to the best of our knowledge and belief. However, we do not warrant the accuracy of the floorplans and measurements. The services, systems and appliances shown have not been tested and no guarantee is given as to their operability or efficiency. This plan is for illustrative purposes only and should be used as such for any prospective purchase. The services, systems and appliances shown have not been tested and no guarantee is given as to their operability or efficiency. This plan is for illustrative purposes only and should be used as such for any prospective purchase. Made with Mapbox ©2023

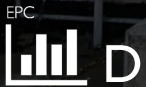
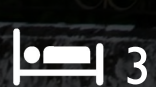


Brennan Ayre O'Neill

Estate Agents | Surveyors | Property Managers

Woodchurch Lane, Prenton CH42 9PJ

Guide Price



£150,000

0151 608 8586
prenton@b-a-o.com

377 Woodchurch Road, Prenton, Wirral,
www.b-a-o.com

The property stands within a row of attractive cottage style terraced homes. Our property stands vacant and as such, and as keyholders, we can usually offer a viewing at short notice. Given its status, vacant possession can be offered with no onward delays. Please call us : (01510) 608 8586 and Sat Nav: CH42 9PJ for your directions. It's close to the bus stop, shops, five minutes by car to the tunnel and f course a short walk to TRFC. Parking permits are available.



These particulars, whilst believed to be accurate are set out as a general outline only for guidance and do not constitute and part of an offer or contract. Intending purchasers should not rely on them as statements or representation of fact, but must satisfy themselves by inspection or otherwise as to their accuracy. No person in this firm's employment has the authority to make or give any representation or warranty in respect of this property. We have not tested any services nor appliances and cannot give any assurances or warranties as to their condition or reliability. All measurements are approximate having been taken with an electronic measuring device.

