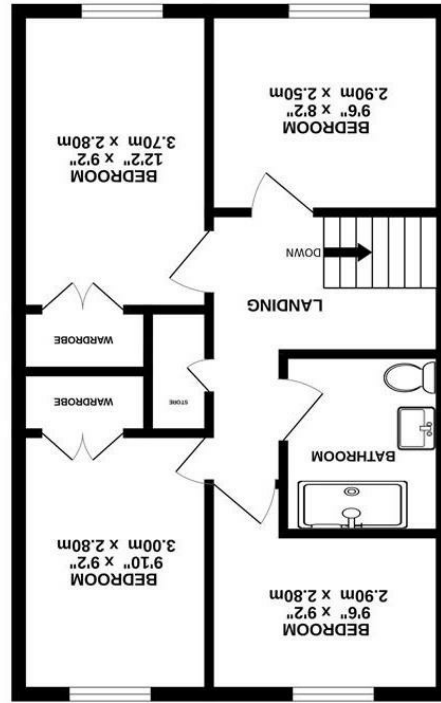
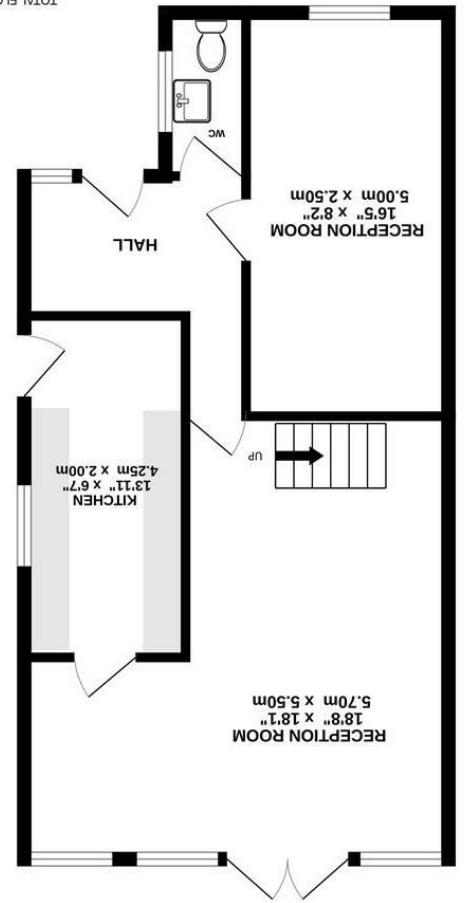




What every attempt has been made to ensure the accuracy of the floorplan contained here, measurements of doors, windows, rooms and any other areas are approximate and no responsibility is taken for any errors or omissions. This plan is for illustrative purposes only and should be used as a guide only. Prospective purchasers, the services, systems and appliances shown have not been tested and no guarantee as to their operation or efficiency can be given. Made with Metretek ©2024



1ST FLOOR 479 sq.ft. (44.5 sq.m.) approx.



GROUND FLOOR 555 sq.ft. (51.6 sq.m.) approx.



Brennan Ayre O'Neill

Estate Agents | Surveyors | Property Managers

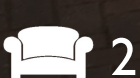
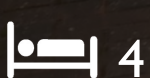


Palm Grove, Prenton CH43 ITG

Guide Price

0151 608 8586

prenton@b-a-o.com



£279,500

377 Woodchurch Road, Prenton, Wirral,

www.b-a-o.com

The property has a particularly smart, bright interior, easy on the eye, well presented and very much 'move-in-able'.

The property also has a smart double glazing system and is complimented by a modern gas central heating system. Note too, the smart oak veneered doors, matching woodwork and glass to the staircase.

Plenty of space outdoors too, with a good parking bay for a couple of cars, side by side, whilst to the rear of the house is a nicely sized garden with patio.

Please note there is no onward property chain to this property purchase.

Locator

The property stands more or less around half way along Palm Grove. So it's an easy walk to St Anselm's boys school and BHSA for girls. Bus services are easy with Park Road South (and Birkenhead Park) and the village in the opposite all just about a ten minute walk.

For directions Sat Nav: CH43 ITG



These particulars, whilst believed to be accurate are set out as a general outline only for guidance and do not constitute and part of an offer or contract. Intending purchasers should not rely on them as statements or representation of fact, but must satisfy themselves by inspection or otherwise as to their accuracy. No person in this firm's employment has the authority to make or give any representation or warranty in respect of this property. We have not tested any services nor appliances and cannot give any assurances or warranties as to their condition or reliability. All measurements are approximate having been taken with an electronic measuring device.

