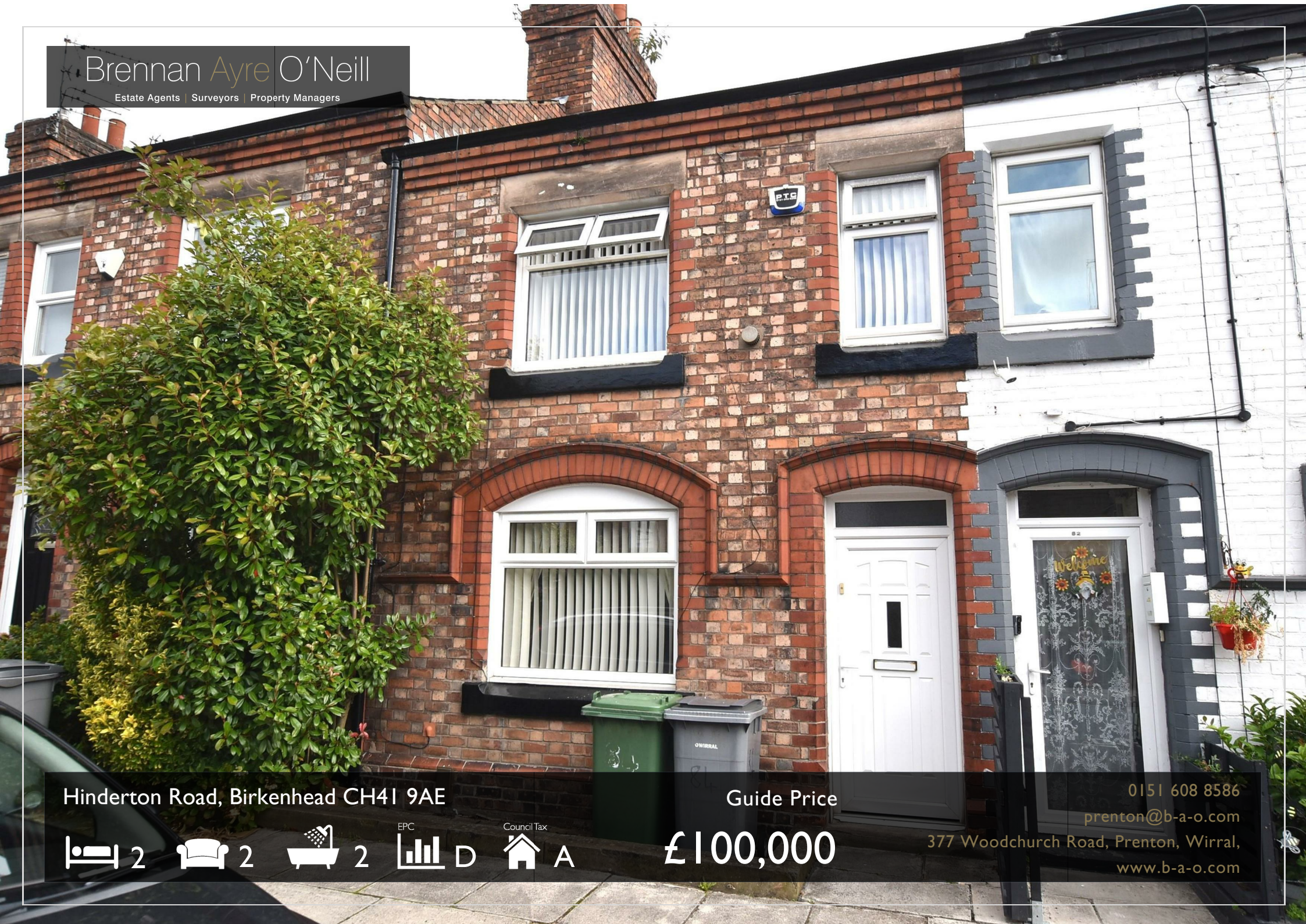
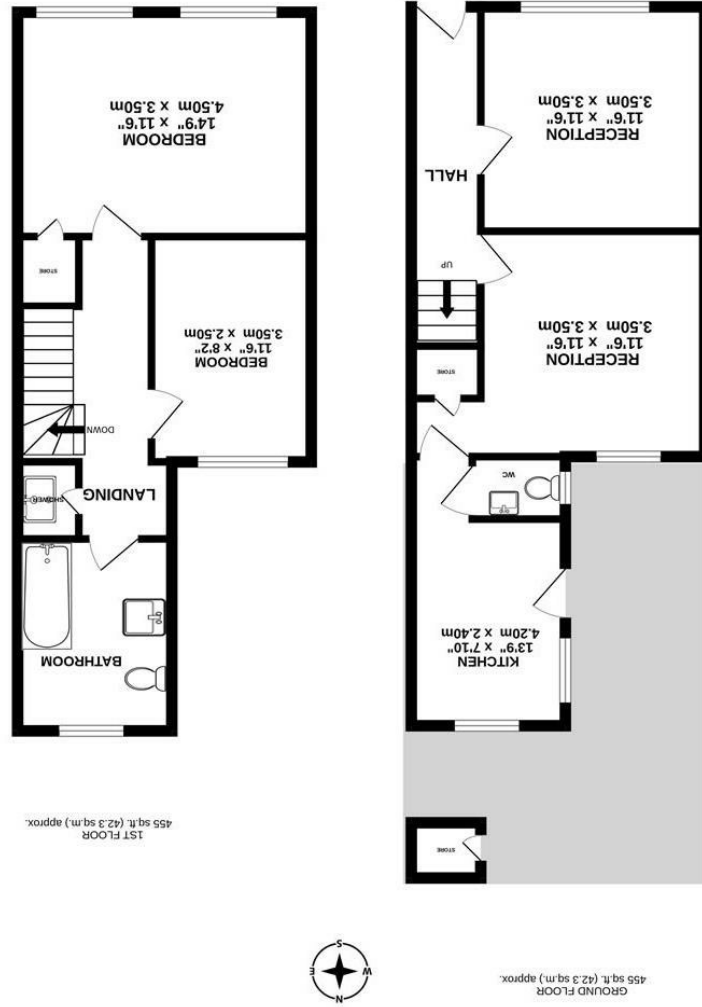




Estate Agents | Surveyors | Property Managers

Brennan Ayre O'Neill

What every attempt has been made to ensure the accuracy of the floorplans contained here. Measurements of doors, windows, doors and openings are approximately taken and should be used as such for general guidance only. The services, systems and appliances shown have not been tested and no guarantee is given as to their operation or efficiency. See page 10 for further details. Made with Mapbox 2024



Brennan Ayre O'Neill
Estate Agents | Surveyors | Property Managers

Hindertons Road, Birkenhead CH41 9AE

Guide Price

0151 608 8586

prenton@b-a-o.com

2
 2
 2
 D
 A

£100,000

377 Woodchurch Road, Prenton, Wirral,
www.b-a-o.com

This is an attractive proposition for anyone looking to upgrade/refurbish and maybe even remodel what is a particularly attractive larger style two bedrooomed Victorian terraced house. The property unusually comes with cloakroom facilities as well as an in built shower cabinet separate from an extra large combined bathroom at first floor. You will also appreciate the size of the main front bedroom on your viewing, together with a generous ground floor layout. There is a yard to the rear of the house

As keyholders we can usually accommodate a viewing at short notice : please call us on 608 8586 (0151). For directions please Sat Nav: CH41 9AE

For your directions please Sat Nav: CH41 9AE



These particulars, whilst believed to be accurate are set out as a general outline only for guidance and do not constitute and part of an offer or contract. Intending purchasers should not rely on them as statements or representation of fact, but must satisfy themselves by inspection or otherwise as to their accuracy. No person in this firm's employment has the authority to make or give any representation or warranty in respect of this property. We have not tested any services nor appliances and cannot give any assurances or warranties as to their condition or reliability. All measurements are approximate having been taken with an electronic measuring device.

