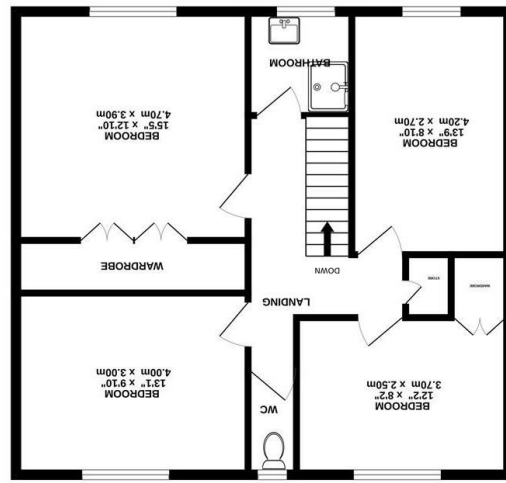


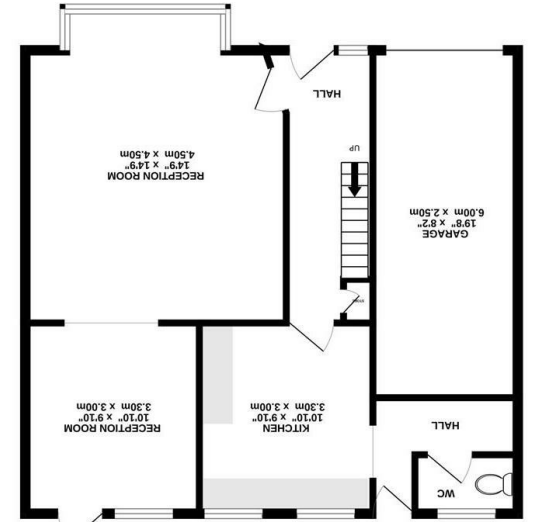


What every attempt has been made to ensure the accuracy of the floorplan contained here, measurements of doors, windows, rooms and any other items are approximate and no responsibility is taken for any error, omission or mis-statement. This plan is for illustrative purposes only and should be used as such by any prospective purchaser. The services, systems and appliances shown have not been tested and no guarantee as to their operating efficiency can be given.
Made with Mapbox ©2024

TOTAL FLOOR AREA: 1485 sq.ft. (137.9 sq.m.) approx.



1ST FLOOR 732 sq.ft. (68.0 sq.m.) approx.



GROUND FLOOR 753 sq.ft. (70.0 sq.m.) approx.



Brennan Ayre O'Neill

Estate Agents | Surveyors | Property Managers

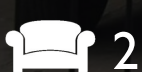
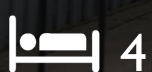


Alton Road, Oxton CH43 1XA

Guide Price

0151 608 8586

prenton@b-a-o.com

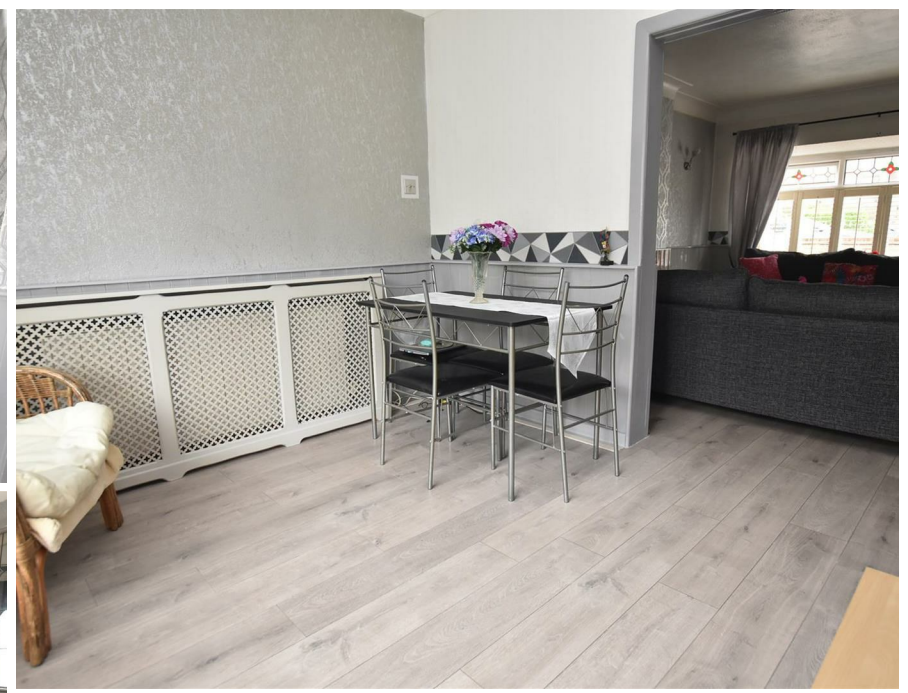


£325,000

377 Woodchurch Road, Prenton, Wirral,

www.b-a-o.com

How fabulous would it be for your children to almost hop skip and jump to school, with the girls' school in particular being so nearby. After a hard week of education you could treat them then to a weekend up in the village where there are plenty of cafe's and eateries to choose from. Back to a working week then and you'll find access to the tunnel for work in the city is easy and just about a ten minute drive away. For directions please sat Nav: CH43 1XA



These particulars, whilst believed to be accurate are set out as a general outline only for guidance and do not constitute and part of an offer or contract. Intending purchasers should not rely on them as statements or representation of fact, but must satisfy themselves by inspection or otherwise as to their accuracy. No person in this firm's employment has the authority to make or give any representation or warranty in respect of this property. We have not tested any services nor appliances and cannot give any assurances or warranties as to their condition or reliability. All measurements are approximate having been taken with an electronic measuring device.

