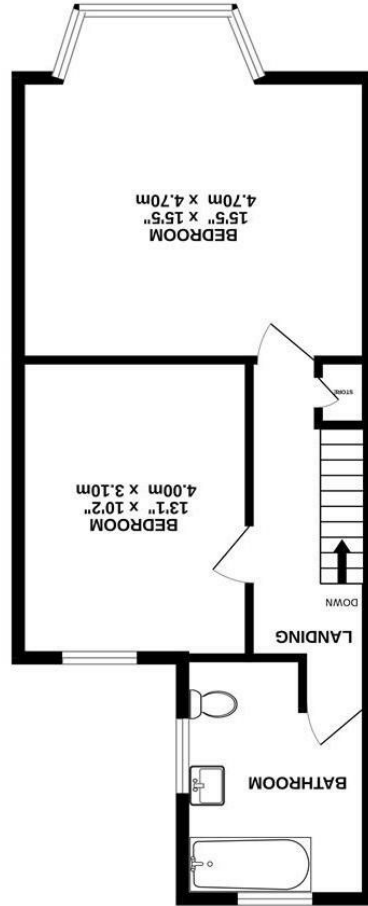
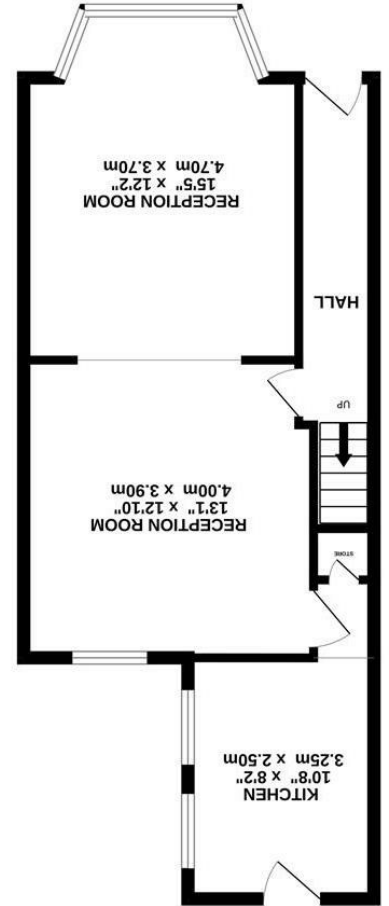




What every agent has been made to ensure the accuracy of the floorplan contained here, measurements of doors, windows, rooms and their areas are approximate and no responsibility is taken by any prospective purchaser. The services, systems and appliances shown have not been tested and no guarantee as to their condition or efficacy can be given. Made with Metropix, ©2023



506 sq.ft. (47.0 sq.m.) approx.



506 sq.ft. (47.0 sq.m.) approx.



## Brennan Ayre O'Neill

Estate Agents | Surveyors | Property Managers



Amery Grove, Birkenhead CH42 9PT

Guide Price

0151 608 8586

prenton@b-a-o.com



E



A

£149,950

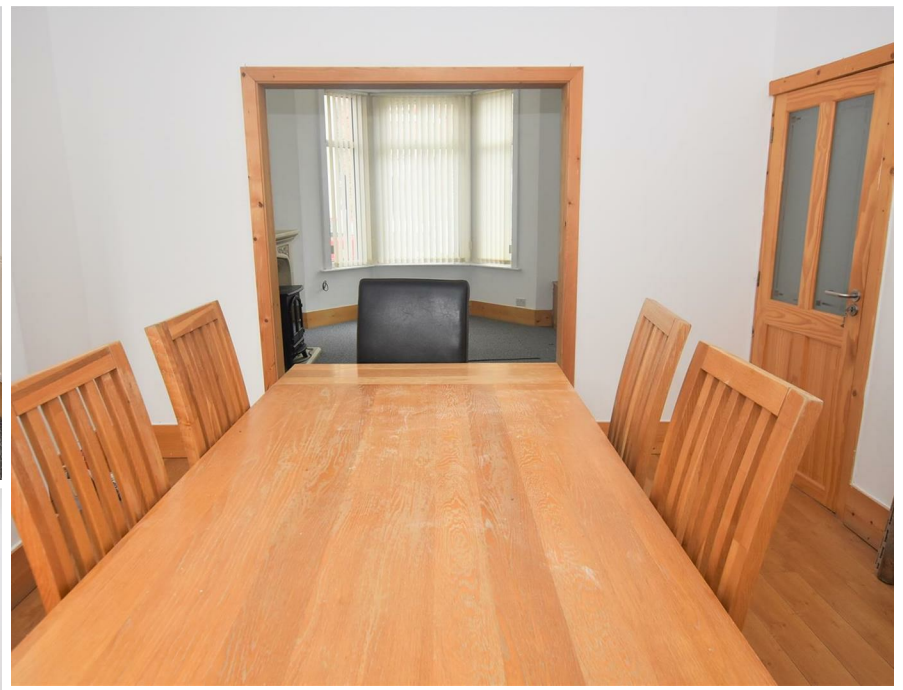
377 Woodchurch Road, Prenton, Wirral,

www.b-a-o.com

Better still, the house is pretty well ready to move into straight away with plain white walls etc; you'll have the time to 'do' or decorate at your own pace. Both reception rooms, open plan or separate, work well for either occasion; the kitchen is a good square shaped space and the first floor is just, well a really good surprise.

The front bedroom is fab. Fab in space, size and the opportunities of kitting it out with all sorts of queen sized double beds, dressing tables, tv and 'robes are many. The second bedroom, whilst inevitably smaller is a decent 'double' sized bedroom. These two, as we have pointed out, are service by a very generous sized combined bathroom.

Just tucked neatly off Woodchurch Road and for that just a short walk to bus services in either direction; for town, for Liverpool, for schools. Permit parking guarantees a space to this nicely positioned house close to the centre of Prenton village.



These particulars, whilst believed to be accurate are set out as a general outline only for guidance and do not constitute and part of an offer or contract. Intending purchasers should not rely on them as statements or representation of fact, but must satisfy themselves by inspection or otherwise as to their accuracy. No person in this firm's employment has the authority to make or give any representation or warranty in respect of this property. We have not tested any services nor appliances and cannot give any assurances or warranties as to their condition or reliability. All measurements are approximate having been taken with an electronic measuring device.

