



Westside House, Marton

£875,000



Here to help you move.

Westside House, Marton

A rare opportunity to acquire a piece of local history. Westside House is a grade II listed former vicarage dating back to 1847 and is arguably one of the finest period homes to come to the market in recent years.

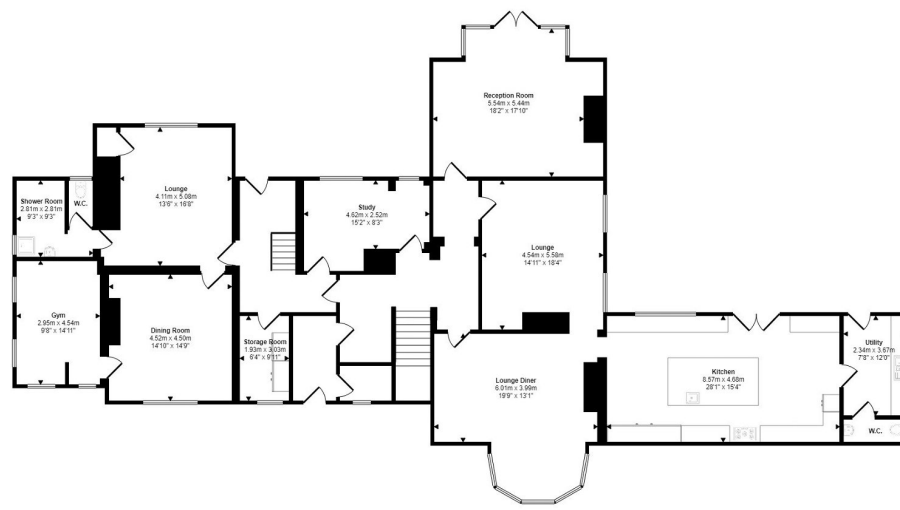




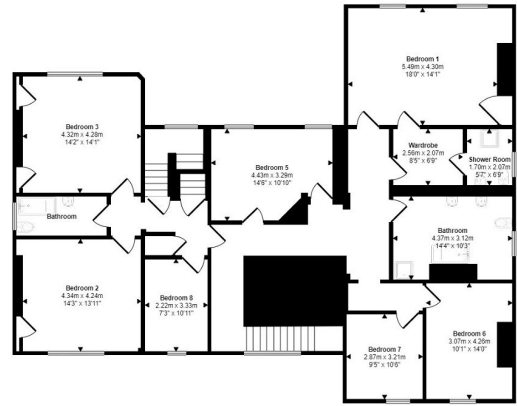




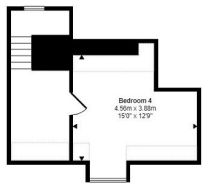
Approx Gross Internal Area
507 sq m / 5463 sq ft



Ground Floor
Approx 261 sq m / 2811 sq ft



First Floor
Approx 196 sq m / 2135 sq ft



Second Floor
Approx 20 sq m / 215 sq ft

Doors lead height below 1.5m

This floorplan is only for illustrative purposes and is not to scale. Measurements of rooms, doors, windows, and any items are approximate and are responsible to check for any areas covered or not displayed. Some of items such as partitions, doors, are representative only and may not match the real items. Scale with Masterplan 050.

📍 26-28 High Street, Stokesley, Middlesbrough, TS9 5DQ

✉️ stokesley@harveybrooks.com

☎️ (01642) 687 223

🌐 www.harveybrooks.com

