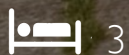


Brennan Ayre O'Neill

Estate Agents | Surveyors | Property Managers



Freehold



3



EPC



Council Tax



Kingsley Avenue, Eastham

Price

£165,000

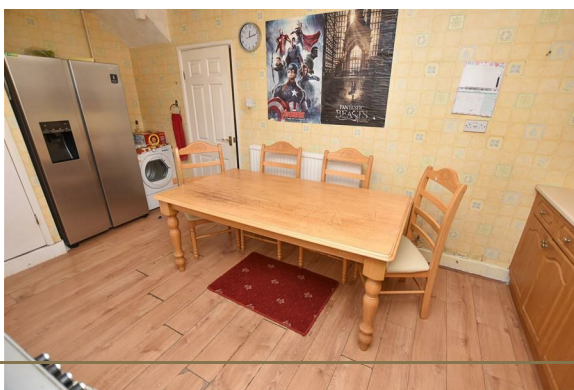
This well-presented 3 bedroom end of terrace property offers ideal family living with spacious accommodation whilst in a convenient location close to local amenities, schools, and transport links.

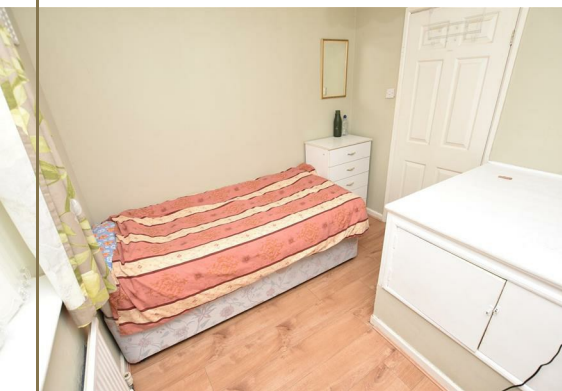
In brief the accommodation comprises an entrance hall, separate lounge and a generous dining kitchen overlooking the garden to the rear, and a useful downstairs W.C. Upstairs, you'll find three generous bedrooms and a family bathroom.

Externally, the property boasts a good-sized rear garden, alongside a garage and off-road parking.

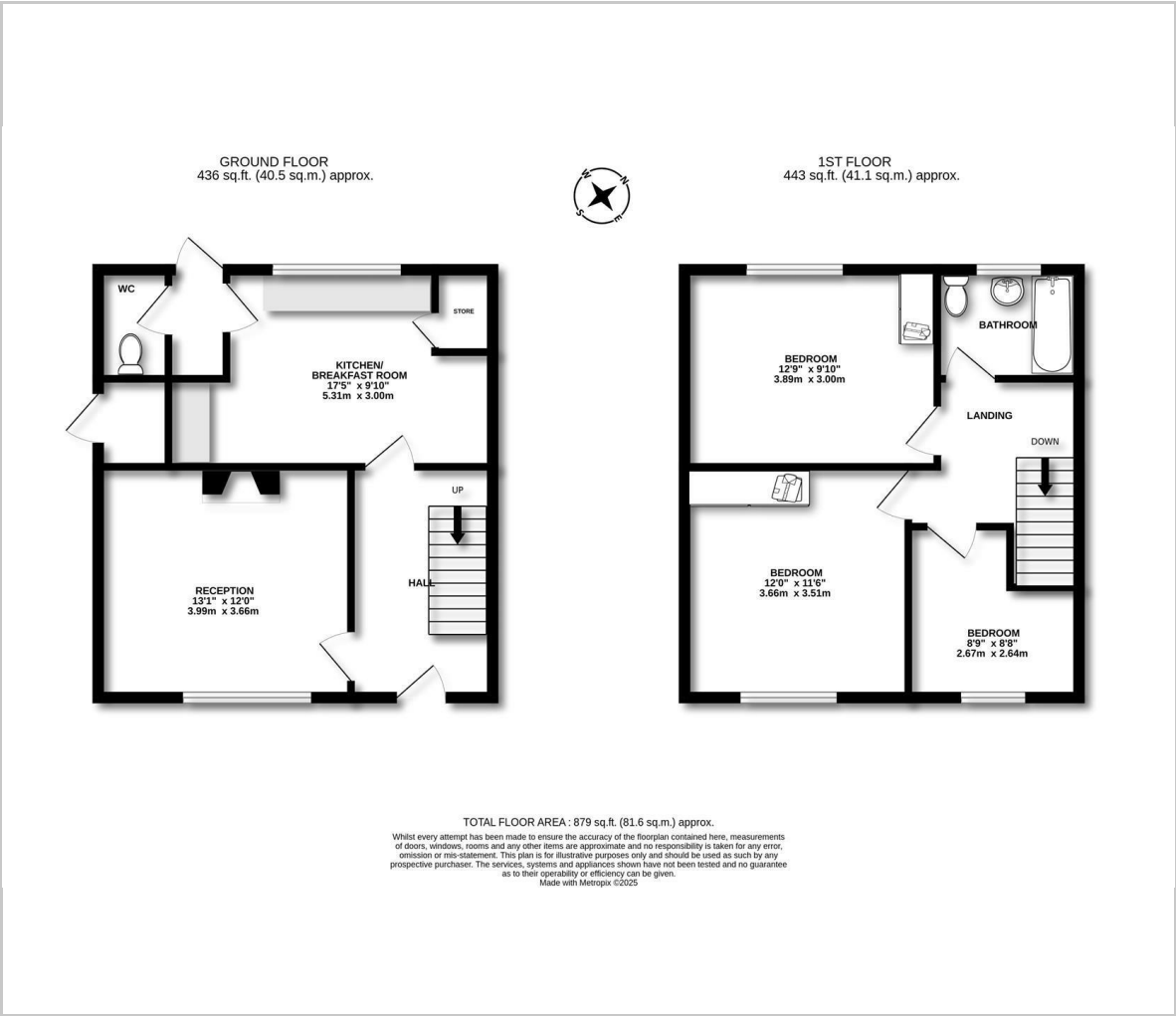
This home is ideal for first-time buyers, young families, or those looking to upsize or down.

Early viewing is highly recommended.





Floor Plan



Viewing

Please contact our Brennan Ayre O'Neill - Bromborough Office on 0151 343 9060 if you wish to arrange a viewing appointment for this property or require further information.

These particulars, whilst believed to be accurate are set out as a general outline only for guidance and do not constitute any part of an offer or contract. Intending purchasers should not rely on them as statements of representation of fact, but must satisfy themselves by inspection or otherwise as to their accuracy. No person in this firms employment has the authority to make or give any representation or warranty in respect of the property.

Brennan Ayre O'Neill
Estate Agents | Surveyors | Property Managers

12 High Street, Bromborough, Wirral, CH62 7HA
Tel: 0151 343 9060
Email: Bromborough@b-a-o.com
www.b-a-o.com

