

Brennan Ayre O'Neill

Estate Agents | Surveyors | Property Managers



Freehold



3



3



1



EPC



B

Council Tax

Beechwood Road, Bromborough

Price  
£239,950

19485402



## JUST TAKE A LOOK AT WHAT IS ON OFFER

- A deceptive mid-terrace property which has been tastefully modernised and extended by the current owners with some great additions! The accommodation offers a separate lounge, central dining room with additional sitting room off and extended breakfast kitchen. Not forgetting the addition of the utility room and ample built in storage. Whilst upstairs you will find 3 bedrooms and bathroom. Off road parking to the front and pleasant gardens to the rear.

Set back from the road with printed concrete driveway leading to the porch which opens into the hallway and provides access to principle rooms including the well proportioned lounge on the left. Making your way towards the rear of the property you will find the dining room, which is centrally positioned offering built in storage and double doors lead into the extension which provides further reception space with vaulted ceiling, French doors open onto the garden and connecting door into the extended kitchen.

The extended kitchen offers a wide range of wall and base units finished in white with inset oven, hob and sink with space for appliances, contrasting worktops which incorporates breakfast bar with additional dining space. Double doors open onto the garden.

You will also find further storage and utility off the hallway.

Making your way upstairs, the landing provides access to principle rooms including 3 generous bedrooms (two of which offer built in wardrobes)

The 3 piece bathroom offers a white suite including bath with shower above, sink with vanity unit and WC not forgetting underfloor heating.

To the rear of the property you will find a





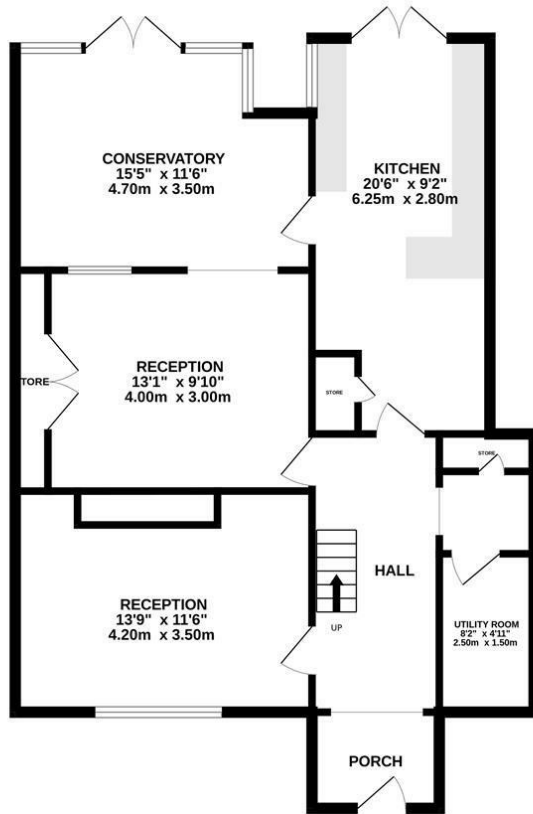


landscaped garden with patio area to the immediate rear, Astro turf lawn with raised planters, paved pathway and additional seating with summer house and bar.

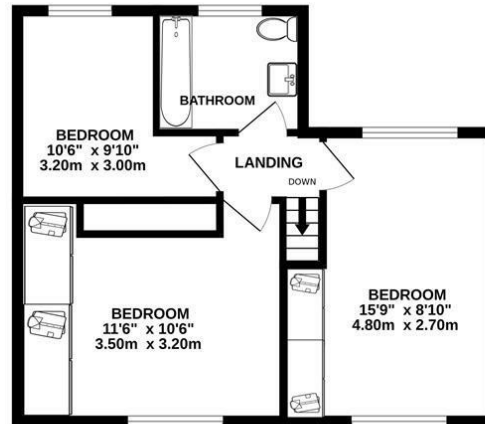




GROUND FLOOR  
909 sq.ft. (84.4 sq.m.) approx.



1ST FLOOR  
463 sq.ft. (43.0 sq.m.) approx.



TOTAL FLOOR AREA : 1372 sq.ft. (127.4 sq.m.) approx.

Whilst every attempt has been made to ensure the accuracy of the floorplan contained here, measurements of doors, windows, rooms and any other items are approximate and no responsibility is taken for any error, omission or mis-statement. This plan is for illustrative purposes only and should be used as such by any prospective purchaser. The services, systems and appliances shown have not been tested and no guarantee as to their operability or efficiency can be given.  
Made with Metropix ©2025



## Viewing

Please contact our Brennan Ayre O'Neill - Bromborough Office on 0151 343 9060 if you wish to arrange a viewing appointment for this property or require further information.

**Brennan Ayre O'Neill**

Estate Agents | Surveyors | Property Managers

12 High Street, Bromborough, Wirral, CH62 7HA

Tel: 0151 343 9060

Email: [Bromborough@b-a-o.com](mailto:Bromborough@b-a-o.com)

[www.b-a-o.com](http://www.b-a-o.com)



These particulars, whilst believed to be accurate are set out as a general outline only for guidance and do not constitute any part of an offer or contract. Intending purchasers should not rely on them as statements of representation of fact, but must satisfy themselves by inspection or otherwise as to their accuracy. No person in this firm's employment has the authority to make or give any representation or warranty in respect of the property.

19485402



