

Brennan Ayre O'Neill

Estate Agents | Surveyors | Property Managers



Freehold



EPC

Council Tax



Rhona Close, Bromborough

Guide Price
£259,995

This property is a must-see, featuring an extended breakfast kitchen with a contemporary finish, a spacious through lounge and dining area, while upstairs boasts a contemporary bathroom and three bedrooms. Well positioned with in the Close with ample off road parking and pleasant gardens. Viewing advised.

Approach

Well located off Brookurst Avenue, this popular house type is deceptive and offers superb accommodation.

Well setback from the road with ample off-road parking, up and over door to store / utility and a uPVC door which opens into the large porch and connecting door into the main accommodation.

The Accommodation

A well proportioned room with stairs leading to the first floor with a contemporary glazed finish and storage below, filled with natural light enjoying a front aspect, stunning central fireplace and open to the dining area with patio doors overlooking the rear garden and connecting door into the kitchen.

Extended Kitchen

The "HUB" of the house! A breakfast kitchen offering a contemporary finish including a wide range of flush cupboards and drawers finished in cream with contrasting worktop and integrated appliances including 2 x eye level oven & grills, hob with extractor above, dishwasher and concealed boiler. The aspect is over the garden with an inset sink below the window, door leading onto the garden and connecting door into utility / store which presents a utility area with additional fitted wall and base units with plumbing for washing machine.

Making your way upstairs

A bright landing provides access to principle rooms which included 3 bedrooms all offering some form of built in storage.





Bathroom

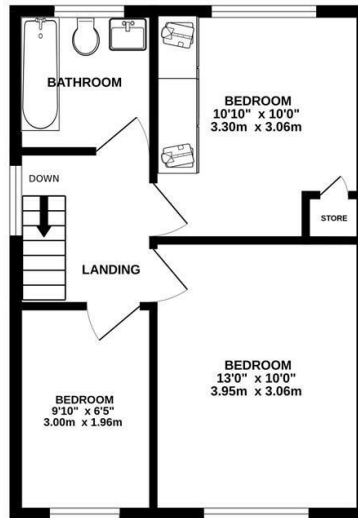
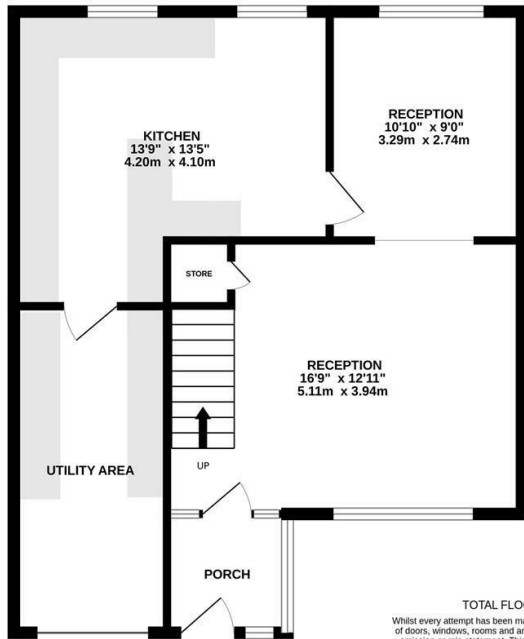
An immaculate bathroom suite with a contemporary finish incorporating bath with shower above, vanity unit with sink and WC, chrome towel rail and tiled walls.

Garden

To the immediate rear there is a paved patio with path continuing to the rear with shed, fence boundaries and a westerly aspect.

GROUND FLOOR
674 sq.ft. (62.6 sq.m.) approx.

1ST FLOOR
404 sq.ft. (37.5 sq.m.) approx.



TOTAL FLOOR AREA : 1077 sq.ft. (100.1 sq.m.) approx.

Whilst every attempt has been made to ensure the accuracy of the floorplan contained here, measurements of doors, windows, rooms and any other items are approximate and no responsibility is taken for any error, omission or mis-statement. This plan is for illustrative purposes only and should be used as such by any prospective purchaser. The services, systems and appliances shown have not been tested and no guarantee as to their operability or efficiency can be given.
Made with Metropix ©2024



Viewing

Please contact our Brennan Ayre O'Neill - Bromborough Office on 0151 343 9060 if you wish to arrange a viewing appointment for this property or require further information.

Brennan Ayre O'Neill

Estate Agents | Surveyors | Property Managers

12 High Street, Bromborough, Wirral, CH62 7HA

Tel: 0151 343 9060

Email: Bromborough@b-a-o.com

www.b-a-o.com



These particulars, whilst believed to be accurate are set out as a general outline only for guidance and do not constitute any part of an offer or contract. Intending purchasers should not rely on them as statements of representation of fact, but must satisfy themselves by inspection or otherwise as to their accuracy. No person in this firm's employment has the authority to make or give any representation or warranty in respect of the property.

19348855

