

FIELD & SONS

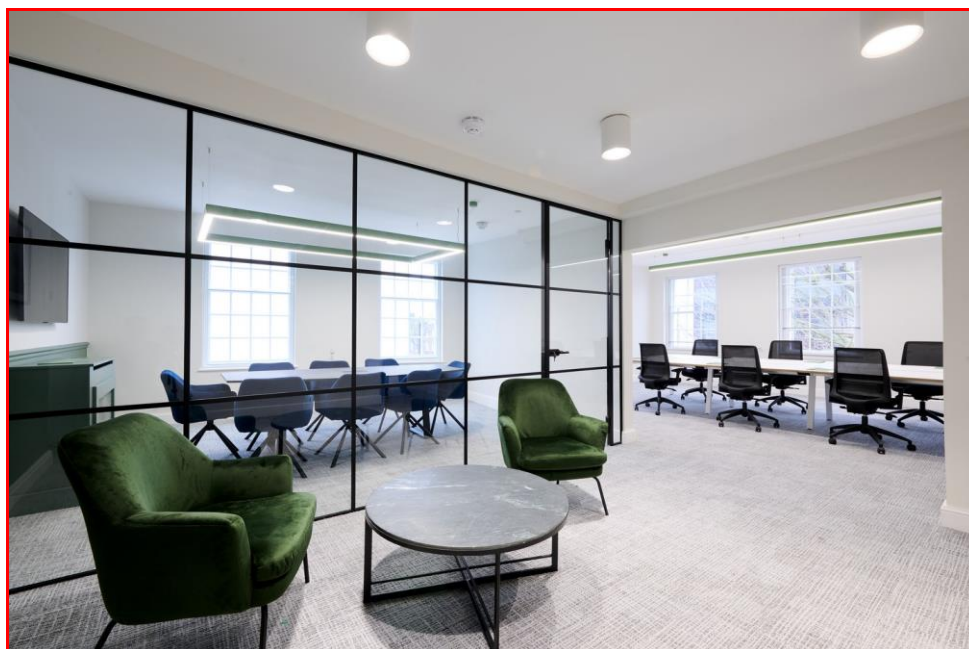
COMMERCIAL

020 7234 9639

54 BOROUGH HIGH STREET
LONDON BRIDGE
LONDON
SE1 1XL

www.fieldandsons.biz

REFURBISHED OFFICE SUITE TO LET



SUITE 5, OVAL HOUSE, 60-62 CLAPHAM ROAD OVAL SW9 0JJ APPROX. 1,274 SQ FT (118.36 SQM)

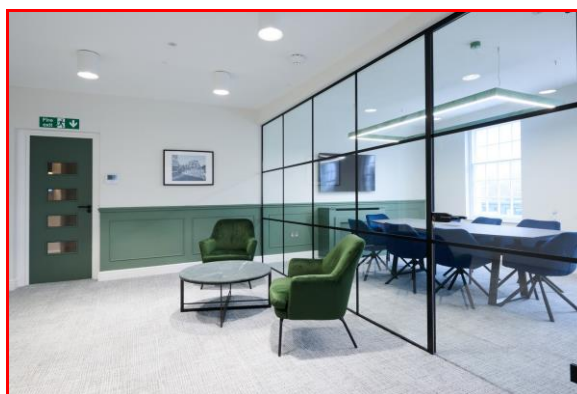
DESCRIPTION

Oval House provides a selection of beautifully crafted offices refurbished to a Grade A standard within this attractive period building, providing contemporary workspace within a classic setting.

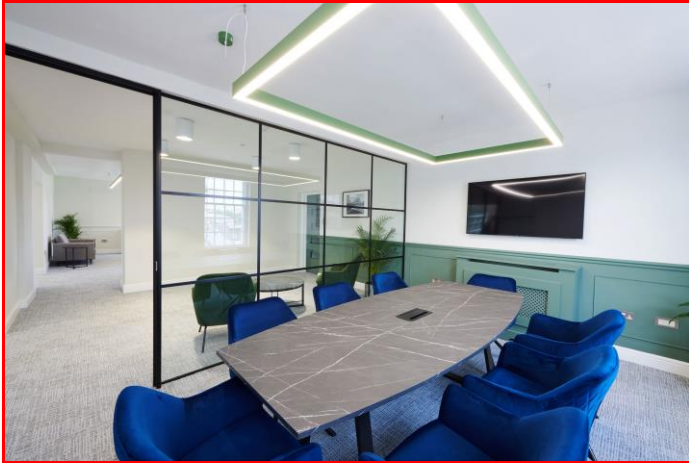
The available suite is located on the second floor front of the building arranged as four interconnected rooms, reception space, glazed meeting room and fully equipped galley kitchen.

Accessed via the ground floor lounge style waiting room with stairs and passenger lift to the upper floors.

The building has been transformed with new heating/cooling systems making the property as environmentally conscious as possible. W.C.s are located on every floor, together with showers on the ground and lower ground floors. Tenants have access to the newly landscaped rear courtyard providing rarely available private outdoor space with a custom 'secret garden' mural. Cycle hoops on site and there are also a limited number of parking space on a first come first served basis.



OVAL HOUSE SW9



AMENITIES

- Recently renovated to Grade A
- VRF air system
- LED lighting
- Fully fitted & furnished
- Fully equipped kitchen in office
- Glazed meeting room
- Lounge style building reception area
- Passenger lift
- Shower facilities
- Landscaped courtyard garden
- On site cycle racks
- First come first serve parking

LOCATION

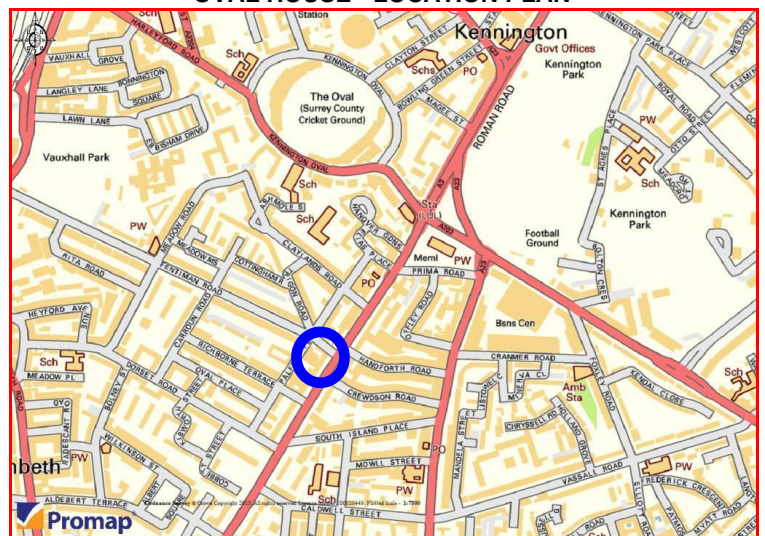
Positioned proudly on the corner of Clapham Road and Fentiman Road in Oval, on the edge of one of London's most exciting regeneration projects, Nine Elms and co-existing with some of capital's most established landmarks.

The property is prominently located just a 3 minute walk from Oval Underground station (Northern line) providing excellent connectivity to the West End and City of London. Vauxhall Underground (Victoria line) and Mainline Stations (Southwest Trains) are within a 10 minute walk. Set between Vauxhall and Kennington, the office is a short walk from the River Thames and is surrounded by a wealth of local amenities and parks.

There are numerous cafes, pubs and gyms in the surrounding area including the Fentiman Arms, Brunswick House and 24 The Oval to name a few. Easy access to Vauxhall Park and Kennington Park, as well as numerous public sports facilities. Local landmarks include Oval Cricket Ground, Lambeth Palace, Brixton Market and Battersea Power Station.



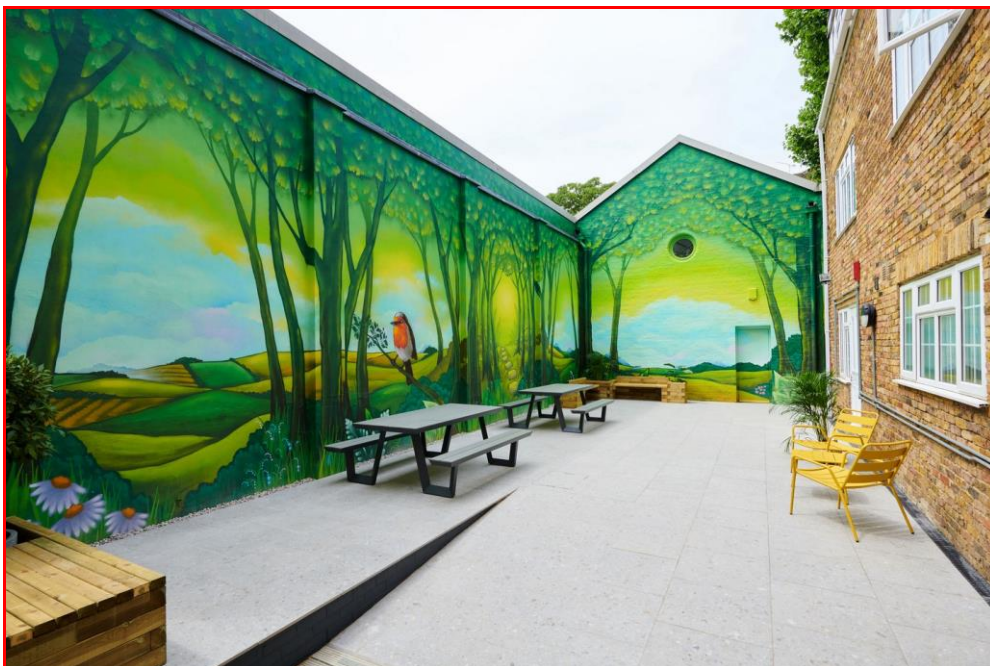
OVAL HOUSE - LOCATION PLAN



FIELD & SONS

COMMERCIAL

OVAL HOUSE SW9



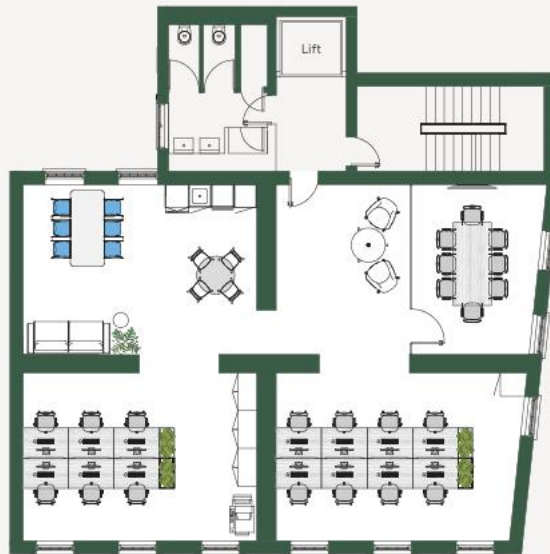
OVAL HOUSE SW9

SUITE 5 INDICATIVE FLOORPLAN

Second floor

Office 5

1,274 sq ft 118.4 sqm



OVAL HOUSE SW9



SUITE 5 : 1,274 SQ FT (118.36 SQ M)

RENT : £52,871 PER ANNUM, EXCLUSIVE (£41.50 PER SQ FT)

SERVICE CHARGE : £7,094 PER ANNUM (£5.56 PER SQ FT)

BUSINESS RATES : INTERESTED PARTIES TO MAKE THEIR OWN ENQUIRIES TO THE LONDON BOROUGH OF LAMBETH

ENERGY PERFORMANCE : EPC ASSET RATING = 28 (BAND B)



FURTHER DETAILS



Ben Locke
benlocke@fieldandsons.co.uk
07886 592960 / 020 7234 9639

Nigel Gouldsmith
nigelgouldsmith@fieldandsons.co.uk
07932 788708 / 020 7234 9639

www.fieldandsons.biz



Zach Forest
zach@forestrealestate.co.uk
07890 209397 / 020 3355 1555

Casey Okin
casey@forestrealestate.co.uk
07391 453076 / 020 33551555

www.forestrealestate.co.uk

Important Notice

The Joint Agents for themselves and for their clients of this property whose agents they are give notice that: 1) These particulars are set out as a general outline only for the guidance of intending purchasers/tenants and do not constitute part of any offer or contract. 2) All descriptions, dimensions, references to conditions and necessary permissions for use and occupation and other details are given without responsibility and any intending purchaser or tenant should not rely on them as statements or representations of fact but must satisfy themselves by inspection or otherwise as to the correctness of each of them. 3) No person in the employment of the Joint Agents has any authority to make or give any representation or warranty whatsoever in relation to this property.