

FIELD & SONS

COMMERCIAL

020 7234 9639

54 BOROUGH HIGH STREET
LONDON BRIDGE
LONDON
SE1 1XL

www.fieldandsons.biz

FULLY FITTED 'PLUG & PLAY' OFFICES TO LET



THE SIGNAL BUILDING, 93 NEWINGTON CAUSEWAY LONDON SE1 6BN

1,869 – 3,929 SQ FT (173.6 – 365.0 SQM)

LOCATION

Located on the eastern side of Newington Causeway within a short walk of the transport hub at Elephant & Castle approx. 300m to the south, serviced by mainline rail (Thameslink) and Underground (Northern & Bakerloo lines) stations together with numerous bus routes providing ease of access to central and outer London. Borough Underground station (Northern line) at the bottom of Borough High Street is also within walking distance to the north.

The entire Elephant & Castle locality continues to be subject to development and regeneration to provide a vibrant mix of residential, commercial and leisure activities, together with enhanced transport links. The popular Mercato Metropolitano food and drinks venue is on the opposite side of the road.

ACCOMODATION

First Floor : 1,869 sq ft (173.6 sqm)
Second Floor : 2,060 sq ft (191.4 sqm)
Total : 3,929 sq ft (365.0 sqm)

THE SIGNAL BUILDING, SE1

DESCRIPTION

The Signal Building is a mixed use tower building constructed in 2014.

The first and second floor offices are available providing fully fitted and furnished plug and play accommodation with each floor being a mix of open plan space plus meeting rooms, fully equipped kitchens, demised w.c.s and showers plus multiple terraces.

AMENITIES

- Air conditioning
- Accessible raised floor
- LED lighting
- Passenger lift
- DDA compliant
- Excellent decorative condition
- Great natural light
- Secure bike storage

TERMS

Available as individual floors or a combined letting of the whole on new leases by arrangement.

RENT

£32.50 per sq ft per annum, exclusive of all outgoing.

SERVICE CHARGE

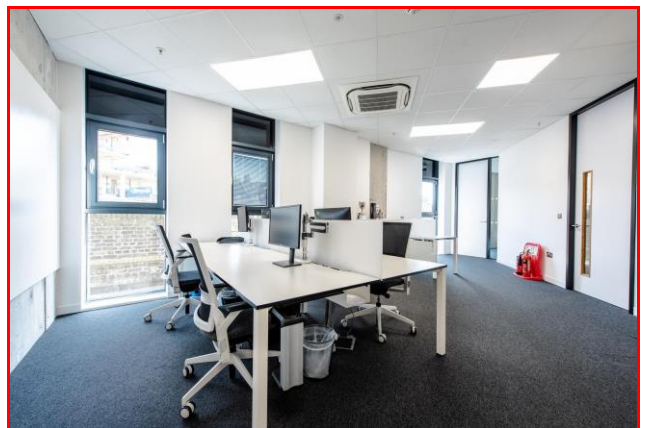
£2.76 per sq ft per annum

BUSINESS RATES

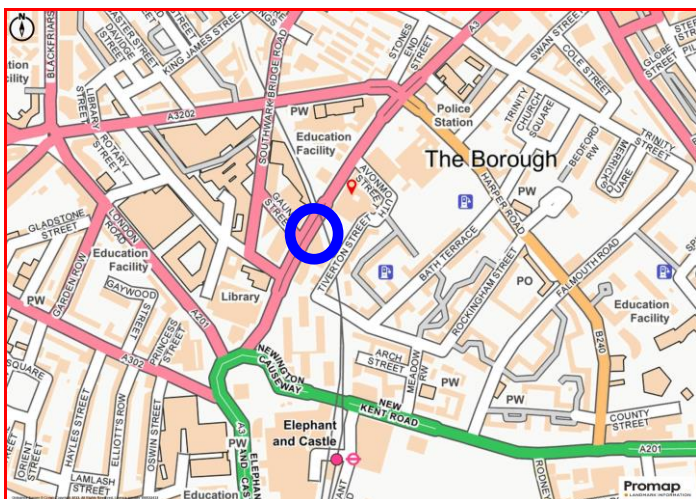
£15.98 per sq ft payable for the year 2024/25.

ENERGY PERFORMANCE

EPC Asset Rating = 56 (Band C).



SIGNAL BUILDING – LOCATION PLAN



FURTHER DETAILS

For further details please contact :

Ben Locke or Nigel Gouldsmith

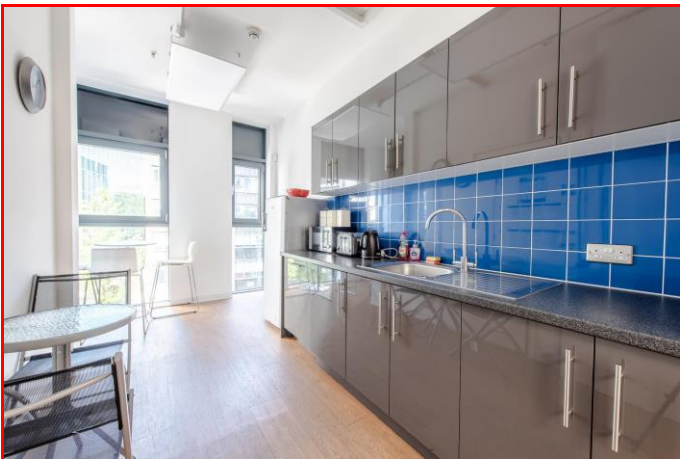
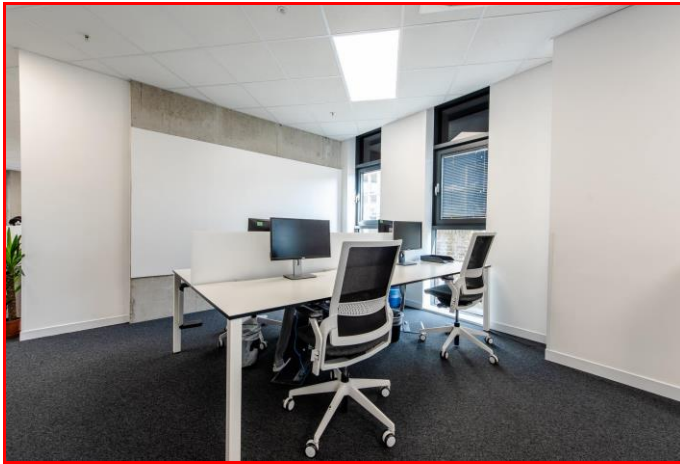
Tel. 020 7234 9639

E-mail : com@fieldandsons.co.uk

www.fieldandsons.biz

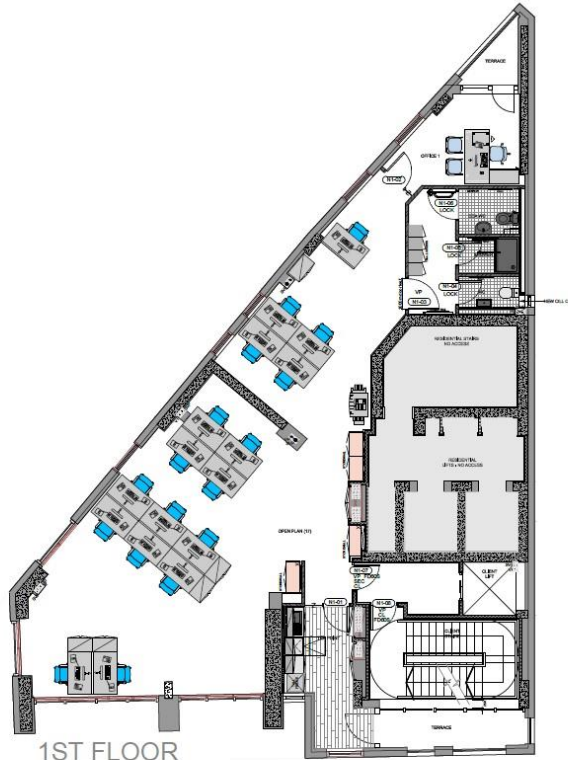
FIELD & SONS
COMMERCIAL

SIGNAL BUILDING, SE1

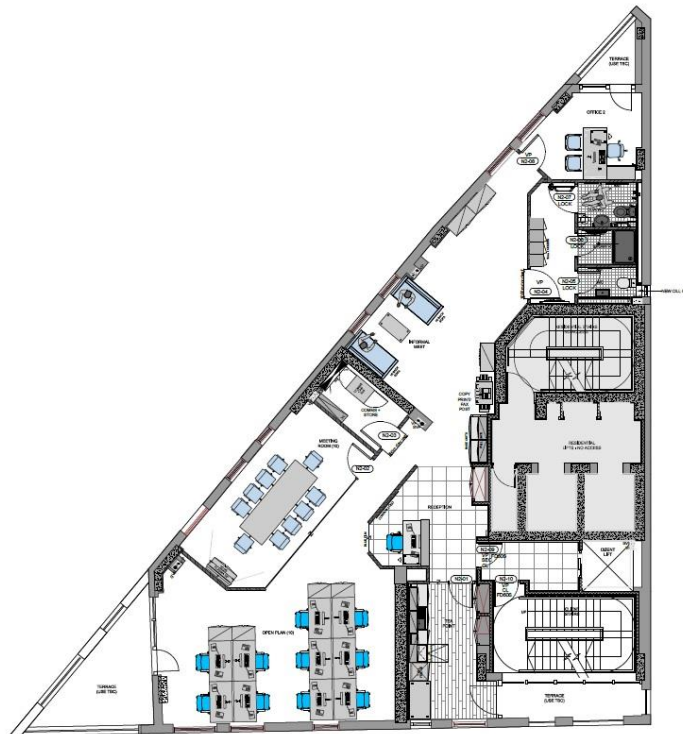


Field & Sons for themselves and for their clients of this property whose agents they are give notice that: 1) These particulars are set out as a general outline only for the guidance of intending purchasers/tenants and do not constitute part of any offer or contract. 2) All descriptions, dimensions, references to conditions and necessary permissions for use and occupation and other details are given without responsibility and any intending purchaser or tenant should not rely on them as statements or representations of fact but must satisfy themselves by inspection or otherwise as to the correctness of each of them. 3) No person in the employment of Field & Sons has any authority to make or give any representation or warranty whatsoever in relation to this property.

SIGNAL BUILDING, SE1



1ST FLOOR
NET INTERNAL AREA:
173.71 SQ.M (1,869 SQ FT)



2ND FLOOR
NET INTERNAL AREA:
191.41 SQ.M (2,060 SQ FT)