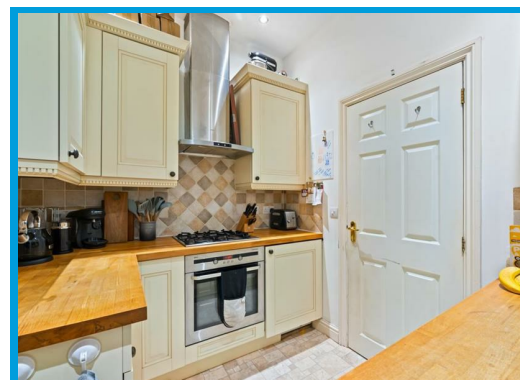
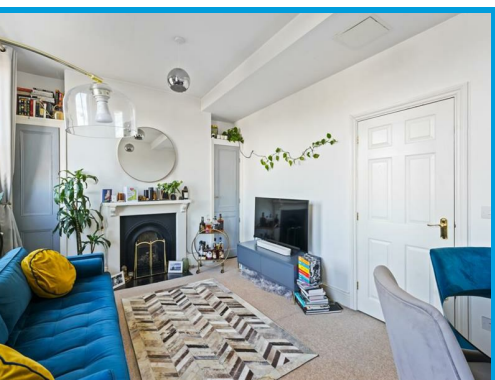




Hunter Road, Guildford Surrey, GU1 3LH

£1,750 PCM

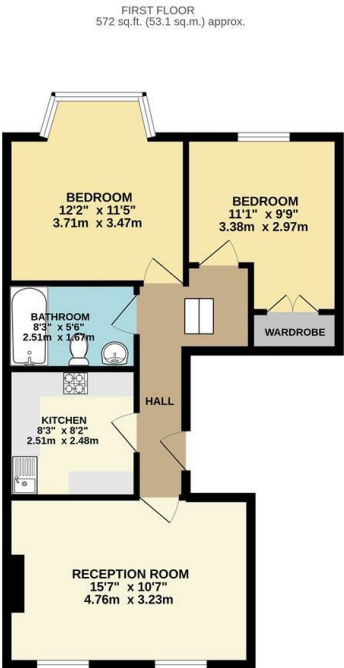
Located in the heart of the town centre in a quiet, leafy location, this well presented two double bedroom apartment offers spacious and well presented accommodation throughout.



Description

Located in a leafy and highly popular location only moments from Guildford High Street, this well presented two double bedroom apartment offers spacious accommodation throughout.

Accessed through secure phone entry system, the property comprises an entrance hall leading to a lounge with bay window, modern kitchen with integrated appliances, two double bedrooms and a bathroom with shower.



TOTAL FLOOR AREA : 572 sq.ft. (53.1 sq.m.) approx.

While every attempt has been made to ensure the accuracy of the floorplan contained here, measurements of doors, windows, stairs and any other items are approximate and no responsibility is taken for any error or omission on the drawings. This plan is for illustrative purposes only and should not be used as such by any prospective purchaser. The services, systems and appliances shown have not been tested and no guarantee as to their operability or efficiency can be given.

Made with Metreplan C2002

