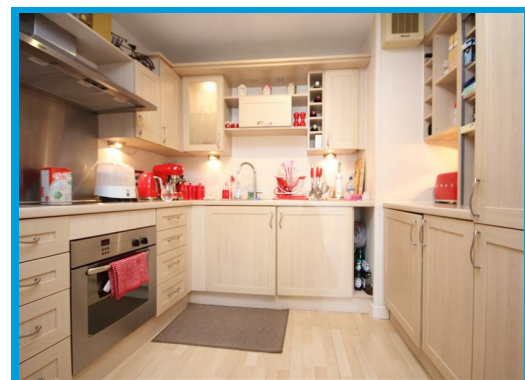




Chantry Place, Sydenham Road Guildford, Surrey GU1 3SF

£1,600 PCM

Located in the heart of the town centre, this beautifully presented two bedroom apartment is positioned in a well maintained building with secure underground parking.



Description

Located in the heart of the town centre, this two bedroom apartment is positioned in a well maintained building and is presented in excellent order throughout.

The property is accessed via secure phone entry system and comprises an entrance hall with built in storage, a lounge/ dining room, a modern kitchen with built in appliances, a master bedroom with walk in wardrobe, further bedroom and a bathroom with shower.

The property further features secure gated parking and is only moments from Guildford High street, local amenities and popular local bars and restaurants.

