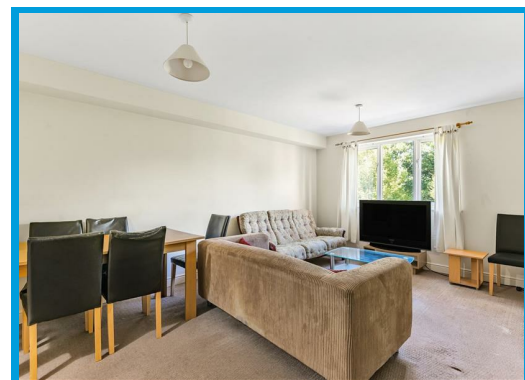
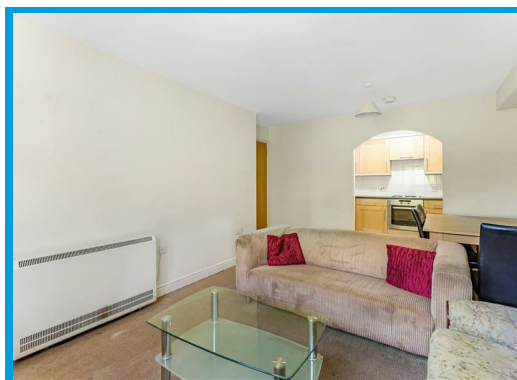
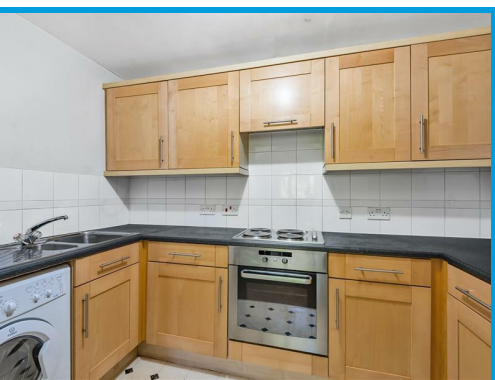




Faraday Road, Guildford, Surrey GU1 1EA

£1,650 PCM

A well presented two bedroom apartment with en-suite to the master bedroom, only moments from Guildford town centre.



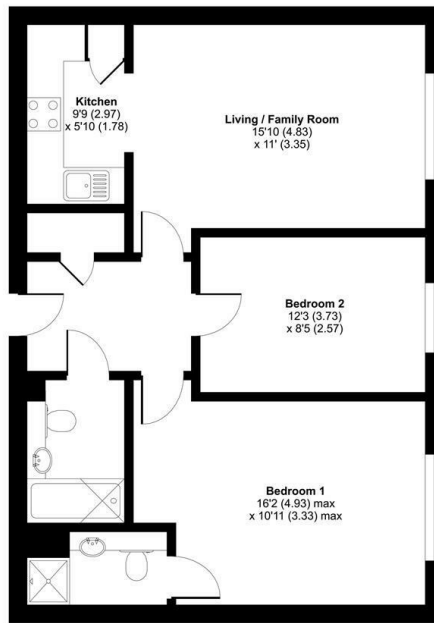
Description

This well presented two bedroom apartment only moments from Guildford town centre. The property boasts two double bedrooms, modern en-suite to master bedroom, modern family bathroom, modern fitted kitchen and allocated parking for one car. Further benefits include shared communal gardens and well maintained communal areas. This property has remained popular with renters and commuters since it was built in 2003. Viewings highly recommended.

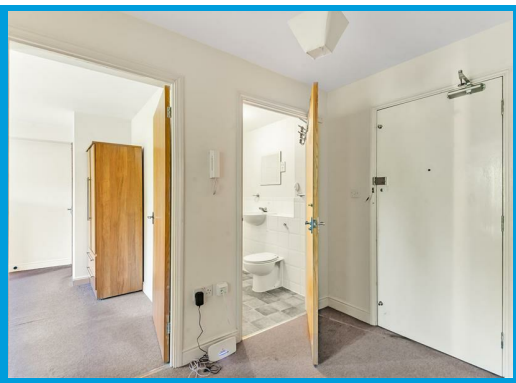
Faraday Road, Guildford, GU1

Approximate Area = 695 sq ft / 64.5 sq m

For identification only - Not to scale



GROUND FLOOR



Energy Efficiency Rating		Current	Potential
Very energy efficient - lower running costs			
(92 plus) A			
(81-91) B			
(69-80) C			
(55-68) D			
(39-54) E			
(21-38) F			
(1-20) G			
Not energy efficient - higher running costs			
England & Wales		74	82
EU Directive 2002/91/EC			

Environmental Impact (CO ₂) Rating		Current	Potential
Very environmentally friendly - lower CO ₂ emissions			
(82 plus) A			
(61-81) B			
(69-80) C			
(55-68) D			
(39-54) E			
(21-38) F			
(1-20) G			
Not environmentally friendly - higher CO ₂ emissions			
England & Wales			
EU Directive 2002/91/EC			

