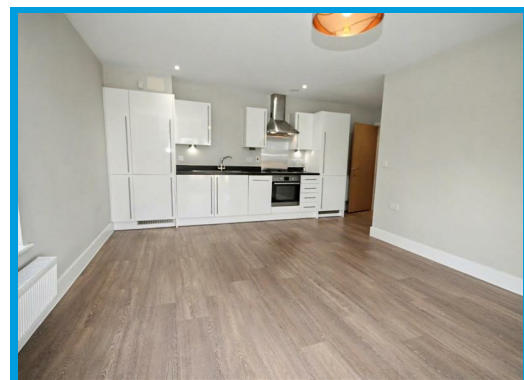
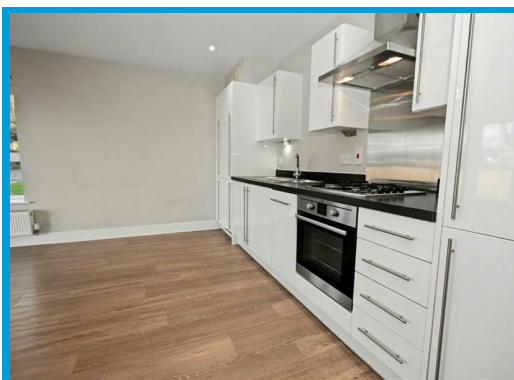
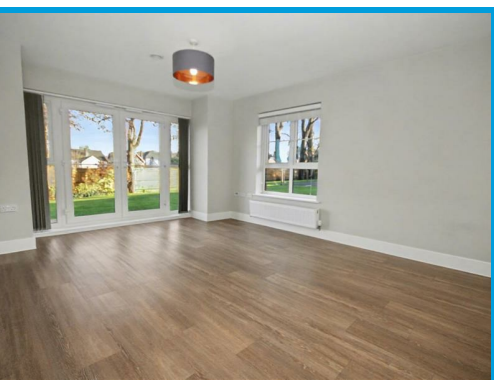




Parkview, Uplands Road Guildford, Surrey GU1 2RW

£1,450 PCM

This stunning and very spacious one double bedroom apartment is located within the highly popular Boxgrove Gardens development which is just a short distance to Guildford town centre. Features include private patio, beautiful communal grounds and allocated parking.



# Description

Located in the highly popular Boxgrove Gardens development which is a short distance to Guildford town centre, this stunning one bedroom apartment offers spacious and well presented accommodation throughout.

The apartment is accessed via secure video phone entry system and comprises an entrance hall which leads to all rooms. There is a large open plan lounge/ diner with French door leading onto the communal grounds and a high specification kitchen with built in appliances. The bedroom has ample built in wardrobes, a beautiful bathroom with shower over bath.

Further features include a private patio, allocated parking and use of the communal grounds which are set within the heart of this popular, quiet development which is surrounded by mature trees.

There is also direct access from the development on to Merrow Downs which offers stunning walks and cycles towards Newlands Corner.



Energy Efficiency Rating		Current	Potential
Very energy efficient - lower running costs			
(92 plus)	A		
(81-91)	B		
(69-80)	C		
(55-68)	D		
(39-54)	E		
(21-38)	F		
(1-20)	G		
Not energy efficient - higher running costs			
England & Wales		EU Directive 2002/91/EC	

Environmental Impact (CO <sub>2</sub> ) Rating		Current	Potential
Very environmentally friendly - lower CO <sub>2</sub> emissions			
(92 plus)	A		
(81-91)	B		
(69-80)	C		
(55-68)	D		
(39-54)	E		
(21-38)	F		
(1-20)	G		
Not environmentally friendly - higher CO <sub>2</sub> emissions			
England & Wales		EU Directive 2002/91/EC	

