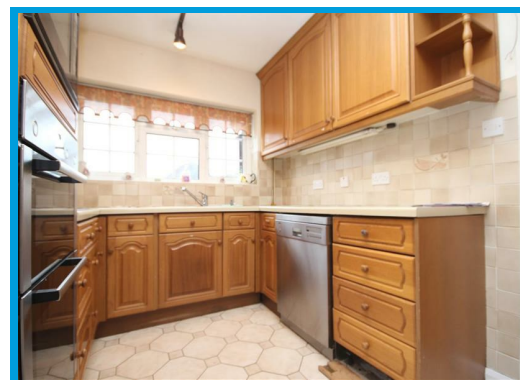
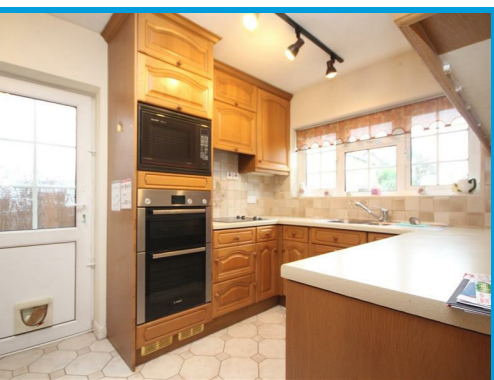




Bridgehill Close, Guildford, Surrey GU2 8BA

£2,850 PCM

**** STUDENT ACCOMODATION 2026-2028 ACADEMIC YEAR**** A spacious and well presented four bedroom STUDENT property located moment away from Surrey University and the centre of Guildford.



Description

A well presented four double bedroom detached house situated within easy access to Surrey University and walking distance to the town centre.

The accommodation comprises; an entrance hall, downstairs bedroom, fully fitted kitchen, reception room, dining room.

Upstairs there are three double bedrooms, en-suite shower room to the master and a family bathroom.

Other benefits include double glazing, gas central heating, driveway providing off road parking, garage & enclosed rear garden.

