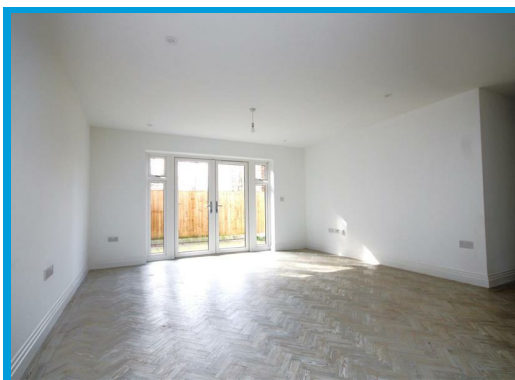
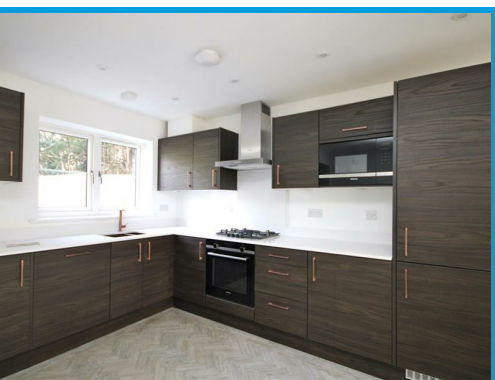




144 London Road, Guildford, GU1 1FG

£2,150 PCM

A recently built, two double bedroom apartment with an en suite to the master bedroom located within a short distance to Guildford town centre and Stoke Park. Features include two allocated parking spaces and a private patio and garden.



Description

Located moments from Stoke Park and within a short distance to Guildford town centre, this stunning two bedroom apartment is offered to the market in immaculate condition.

The property comprises a modern fitted kitchen with open plan living room with double doors to the private garden, a master bedroom with built in wardrobes and en suite double shower, a further double bedroom and a family bathroom with shower.

The property further benefits from two parking spaces and a private garden with patio.

There are two supermarkets within a short distance and access to the A3 in both directions is within a few minutes drive.

