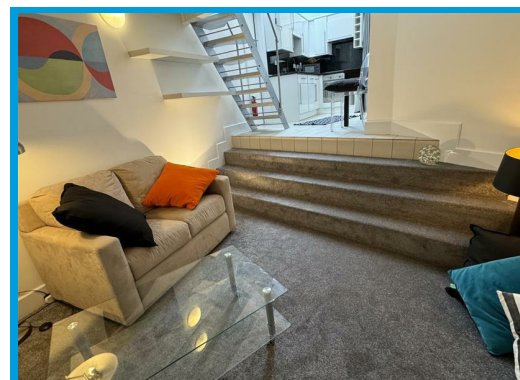
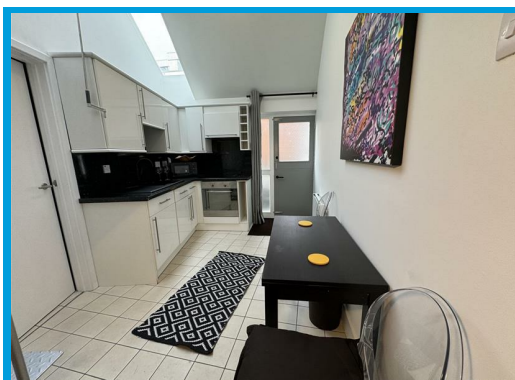
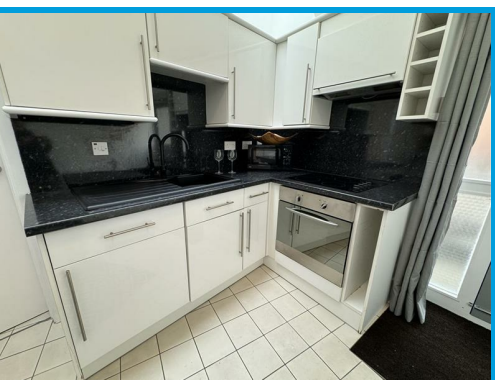




Castle Street, Guildford, GU1 3UW

£1,100 PCM

This is an opportunity to rent a truly unique one bed freehold property. Located in the heart of Guildford town centre within moments walk from Guildford Castle and some of Guildford's finest pubs and restaurants including The Ivy & Ivy Asia,

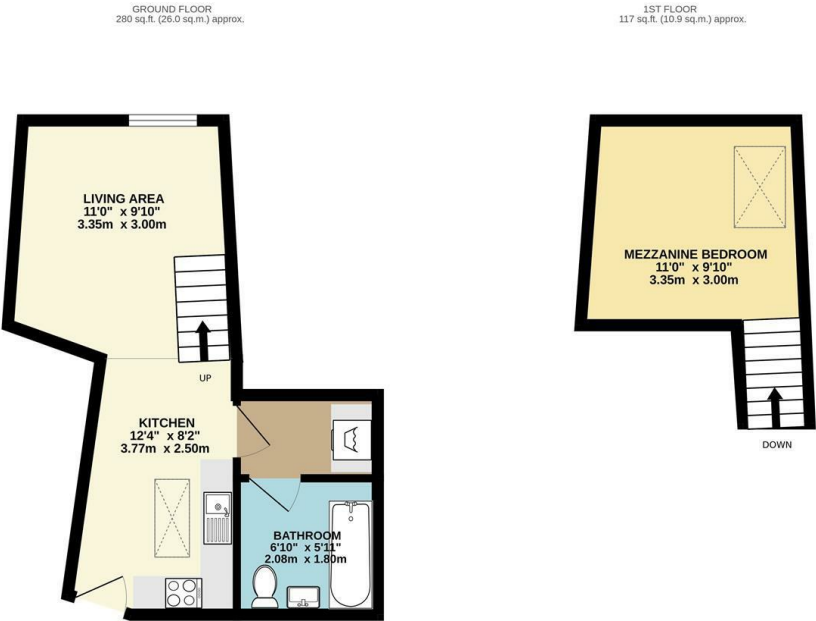


Description

A unique and unusual one bedroom maisonette in a prime town centre location.

Accessed through its own private entrance, the accommodation comprises a modern kitchen with appliances, a lounge, a mezzanine level offering a double bedroom and a bathroom and a shower room.

Sitting within the very heart of Guildford just a stones throw away from Guildford Castle and the best pub and restaurants. Within 100 yards of the High Street a compact hideaway, offering a modern open plan layout and being offered with no onward chain.



TOTAL FLOOR AREA : 397 sq.ft. (36.9 sq.m.) approx.
Whilst every attempt has been made to ensure the accuracy of the floorplan contained here, measurements of doors, windows, rooms and any other items are approximate and no responsibility is taken for any error, omission or mis-statement. This plan is for illustrative purposes only and should be used as such by any prospective purchaser. The services, systems and appliances shown have not been tested and no guarantee as to their operability or efficiency can be given.
Made with Metropix ©2023

