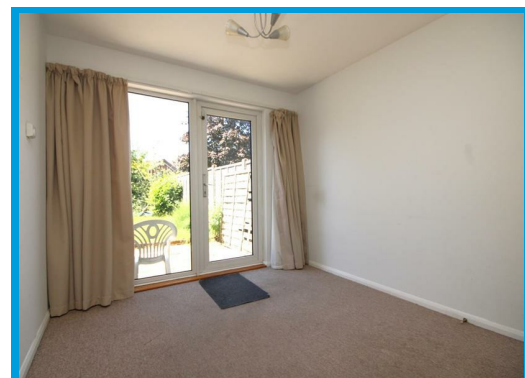




Bradfield Close, Guildford, Surrey GU4 7YT

£1,750 PCM

Beautifully presented three bedroom house in a quiet sought after cul de sac location close to good schools and local amenities.



Description

This beautifully presented three bedroom house in a quiet sought after cul de sac location close to good schools and local amenities. Downstairs, the property compromises a large living/dining room with a large under stairs storage cupboard and a bright and airy kitchen. Upstairs the property has a clean and modern bathroom with shower, a good size master bedroom with double built in wardrobes and an additional two bedrooms.

The property further offers ample parking and a good size private rear garden with a shed for storage. Also, a garage in a nearby block. Local shops and Sainsburys supermarket are only moments away and the A3 and town centre are within easy access.

