



Bushy Hill Drive, Guildford, GU1 2UQ

Guide Price £410,000

In need of complete modernisation throughout, this three-bedroom semi-detached home offers excellent potential in a sought-after location close to top schools. With a private garden and no onward chain, it's an ideal project for investors or buyers looking to create their dream home.





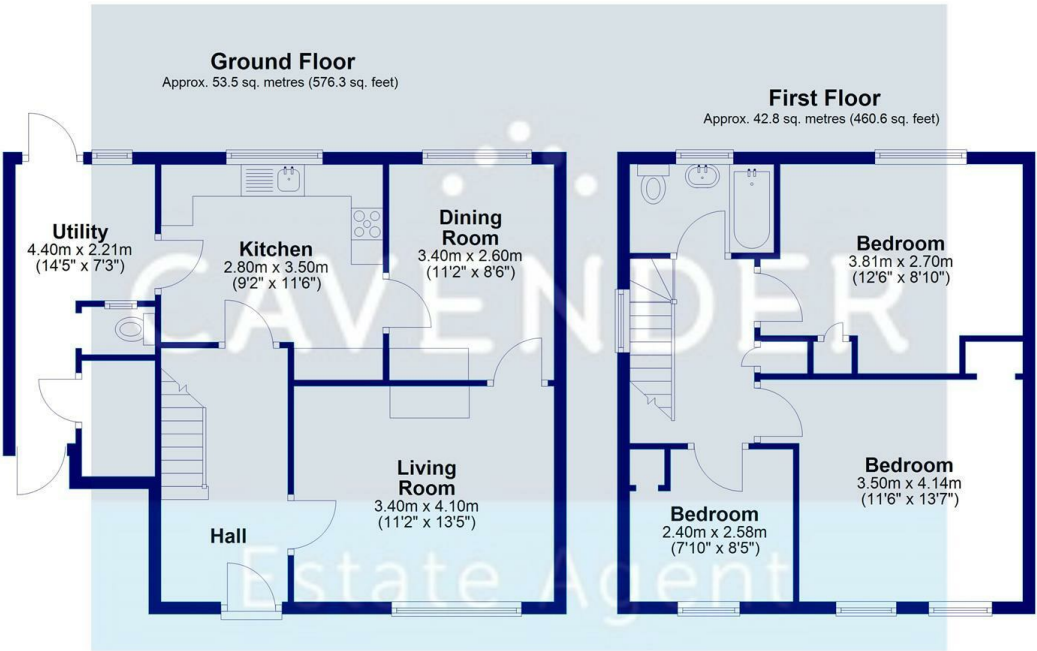
# Description

## 3-Bedroom Semi-Detached Home – Full Renovation Project in Prime Location

Set in a sought-after location close to excellent schools, this three-bedroom semi-detached property offers an exciting opportunity for buyers looking for a full renovation project. Requiring complete modernisation throughout, the home is brimming with potential to create a stylish and comfortable family residence.

Inside, the property features three well-sized bedrooms, one bathroom, and spacious living areas ready to be transformed. The private rear garden provides a quiet outdoor space, while the layout offers flexibility for reimagining or extending (subject to planning permission).

Offered with no onward chain, this is a fantastic chance to add value in a desirable neighbourhood. Ideal for developers, investors, or buyers seeking a project in a great location.



Total area: approx. 96.3 sq. metres (1036.9 sq. feet)

