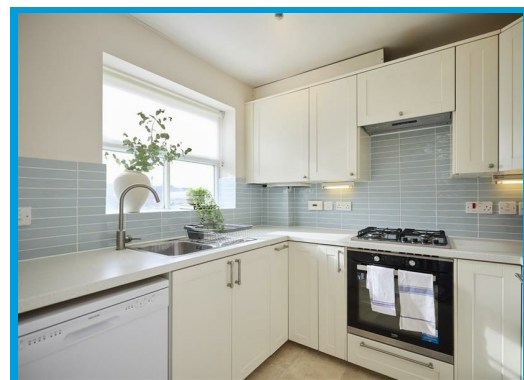
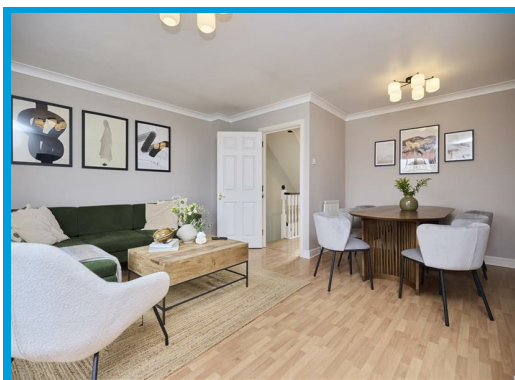




Stocton Close, Guildford, GU1 1HR

£6,900

Three Bedroom town house within private gated development in Guildford. The property offer three well proportioned double bedrooms and three bathrooms. Located in close proximity to both the town centre and mainline station.



Description

Situated in a private gated development just moments from Guildford town centre, is this modern three bedroom townhouse which offers a perfect blend of modern comfort and convenience. This well-presented three-bedroom property is ideal for families, professionals, or investors looking for a prime property.

The property comprises a spacious living area, bathed in natural light, providing a warm and inviting space to relax or entertain. The modern kitchen/diner is well-equipped with contemporary fittings, ample storage, and a stylish finish

The property also boasts three well-proportioned bedrooms, one en-suites, along with two further sleek bathrooms and separate utility room. The private rear garden provides a tranquil retreat, perfect for outdoor dining and entertaining.

Additional benefits include off-street parking and excellent transport links, with Guildford mainline station and the A3 just a short distance away. Located close to a wealth of local amenities, including shops, cafés, and outstanding schools. Rental includes all bills, WIFI and weekly towels and linens. one month minimum stay.

