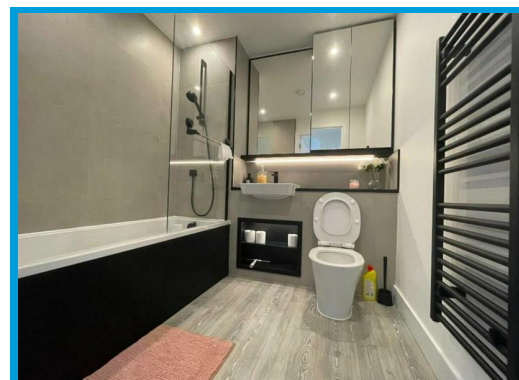
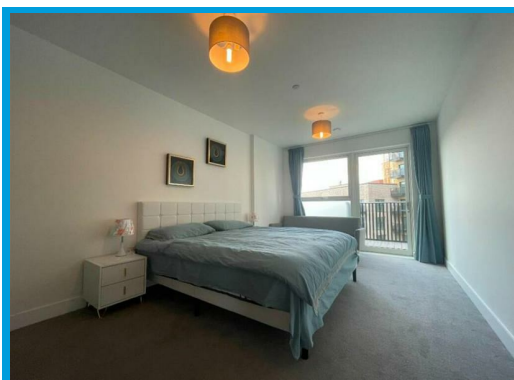
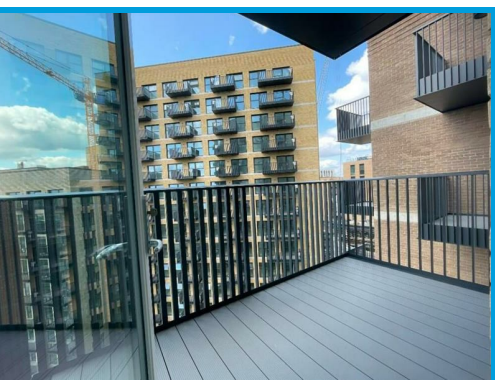


Pavana Square, Brentford, TW8 0YH

£2,100 PCM

Modern one-bedroom furnished apartment on the 11th floor with balcony, residents' gym, and stunning views in Brentford



# Description

Located on the 11th floor of the modern Meeches House development in the heart of Brentford, this beautifully presented one-bedroom furnished apartment offers contemporary living with stunning elevated views.

The property features a spacious open-plan kitchen and living area with floor-to-ceiling windows, flooding the space with natural light. The sleek, fully integrated kitchen is finished to a high standard, ideal for modern living and entertaining. The generously sized double bedroom includes built-in wardrobes, and the stylish bathroom is fitted with quality fixtures and fittings.

Offered fully furnished, this apartment also benefits from a private balcony, ample storage, lift access, secure entry, and access to a residents' gym and landscaped communal areas.

Perfect for professionals seeking a well-connected, high-quality home in a vibrant riverside neighbourhood, just a short walk from Brentford Station with excellent links into Central London.



Energy Efficiency Rating		Current	Potential
Very energy efficient - lower running costs			
(92 plus) A			
(81-91) B			
(69-80) C			
(55-68) D			
(39-54) E			
(21-38) F			
(1-20) G			
Not energy efficient - higher running costs			
England & Wales		EU Directive 2002/91/EC	

Environmental Impact (CO <sub>2</sub> ) Rating		Current	Potential
Very environmentally friendly - lower CO <sub>2</sub> emissions			
(92 plus) A			
(81-91) B			
(69-80) C			
(55-68) D			
(39-54) E			
(21-38) F			
(1-20) G			
Not environmentally friendly - higher CO <sub>2</sub> emissions			
England & Wales		EU Directive 2002/91/EC	

