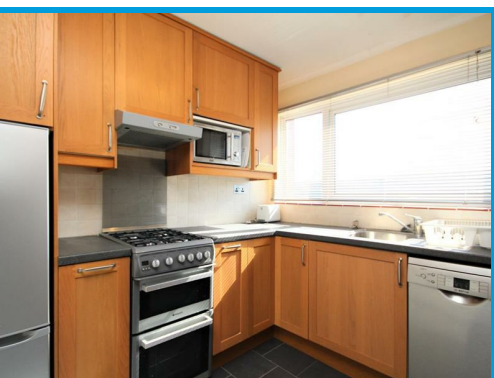




Guildford Park Avenue, Guildford, Surrey GU2 7NH

£4,250 PCM

****STUDENT ACCODMODATION**** Six bedroom house arranged over three floors, moments from Guildford town Centre and Main Line Station. The property is undergoing complete refurbishment throughout.



Description

The property has six double bedrooms, a good sized living room with conservatory leading to the garden, a modern kitchen with appliances. There are two bathrooms. The property is furnished and is being refurbished throughout There is parking for 3 cars.

