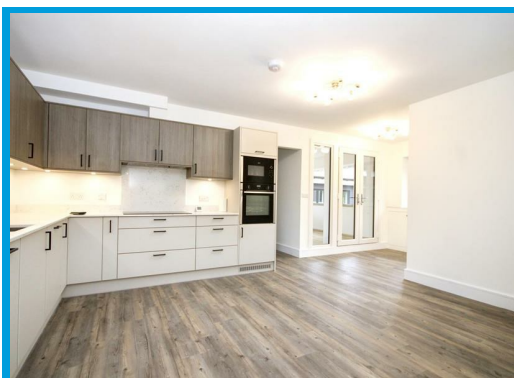
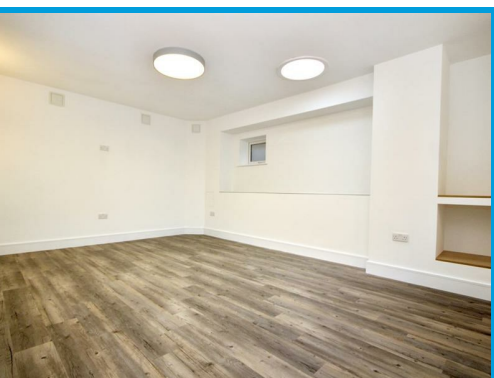




Burrows Lane, Shere, GU5 9QE

£2,400 PCM

This charming, newly built ground floor two bedroom apartment located in the picturesque village of Gomshall. This delightful flat benefits from an en-suite off the master bedroom, a private balcony and allocated parking.



Description

This beautifully presented apartment is located in the heart of the picturesque village of Gomshall, within a desirable and thoughtfully designed development. Offering more space than most, this impressive ground-floor property features a spacious double bedroom with en-suite bathroom, a spacious reception room perfect for both relaxing and entertaining, and a separate utility room – ideal for additional storage and convenience. The is also a further room which would make an excellent bedroom or office space.

Step inside to discover a stylish, brand new interior that combines contemporary finishes with practical living. The sleek modern kitchen and bathroom are designed to a high specification, while the private terrace offers a peaceful spot to enjoy your morning coffee or unwind in the evening.

With allocated on-site parking and an electric vehicle charging point, your day-to-day living is made easy.

This inviting home offers the perfect blend of village charm and modern comfort. Don't miss your chance to view this spacious and well-appointed apartment on Burrows Lane – contact us today to arrange a viewing.

