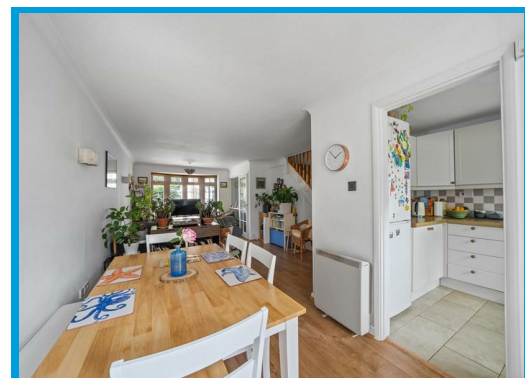
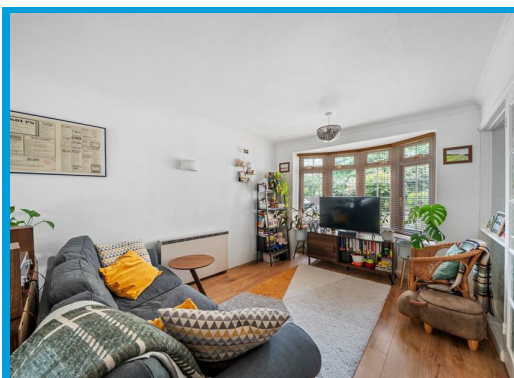




Danesrood, Lower Edgeborough Road Guildford, Surrey GU1 2EY

Guide Price £525,000

Offered with no onward chain, this charming house on Lower Edgeborough Road offers a delightful blend of comfort and convenience. With its prime town centre location, residents will enjoy easy access to a variety of shops, restaurants, and local amenities, making it an ideal choice for those who appreciate urban living.



Description

Nestled in the heart of Guildford, this charming house on Lower Edgeborough Road offers a delightful blend of comfort and convenience. With its prime town centre location, residents will enjoy easy access to a variety of shops, restaurants, and local amenities, making it an ideal choice for those who appreciate urban living. You are also minutes from London Road Station and walking distance from the mainline station.

The property features two spacious double bedrooms, providing ample space for relaxation and rest. The well-appointed reception room serves as a welcoming area for entertaining guests or enjoying quiet evenings at home. The layout is thoughtfully designed to maximise both space and functionality. The property also benefits from a downstairs W/C.

A key highlight of this home is the garage, which offers secure parking and additional storage options. Furthermore, off-street parking is available, ensuring that you and your guests can park with ease.

This house is perfect for individuals or small families seeking a comfortable living space in a vibrant community. With its appealing features and excellent location, it presents a wonderful opportunity for those looking to make Guildford their home. Don't miss the chance to view this delightful property. The property is offered with no onward chain.

