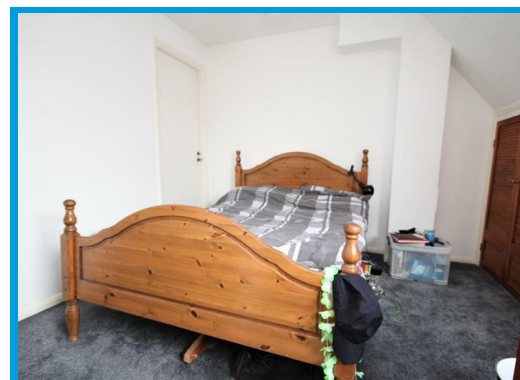
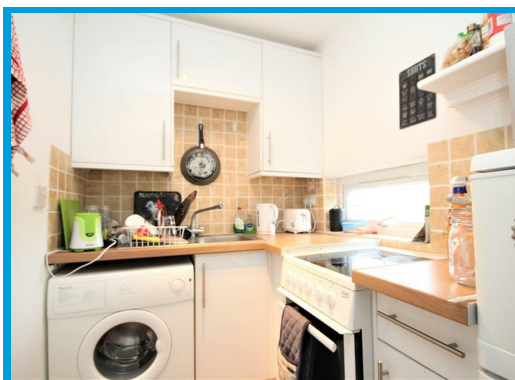
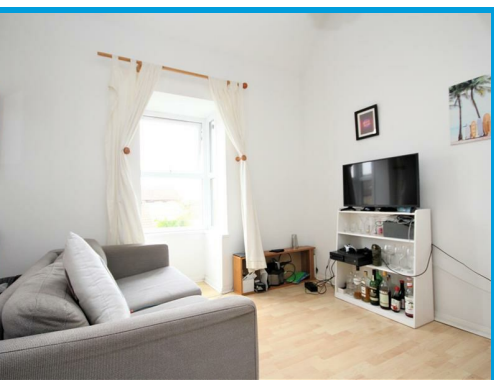




Colburn Crescent, Guildford, Surrey GU4 7YZ

£1,100 Per Month

A bright and airy split level one bedroom apartment, located in a popular residential area with easy access to Guildford Town Centre.



# Description

Located within a popular quiet residential cul de sac, this one bedroom home offers excellent accommodation arranged over two floors. On the ground floor the property comprises a lounge, kitchen with appliances, double bedroom and a bathroom with shower. The property further features residential parking and is conveniently positioned for Guildford town centre, A3 access and local amenities.



Energy Efficiency Rating		
	Current	Potential
Very energy efficient - lower running costs		
(92 plus) A		
(81-91) B		
(69-80) C		
(55-68) D		
(39-54) E		
(21-38) F		
(1-20) G		
Not energy efficient - higher running costs		
England & Wales		EU Directive 2002/91/EC

Environmental Impact (CO <sub>2</sub> ) Rating		
	Current	Potential
Very environmentally friendly - lower CO <sub>2</sub> emissions		
(92 plus) A		
(81-91) B		
(69-80) C		
(55-68) D		
(39-54) E		
(21-38) F		
(1-20) G		
Not environmentally friendly - higher CO <sub>2</sub> emissions		
England & Wales		EU Directive 2002/91/EC