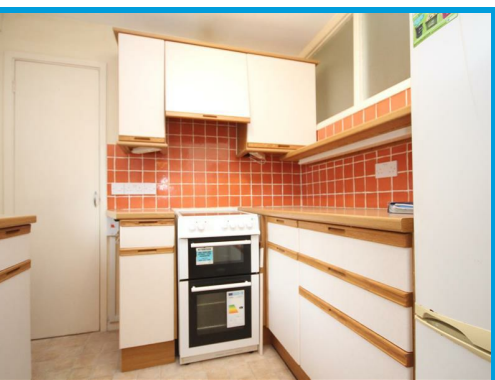




Drummond Court, Drummond Road Guildford, Surrey GU1 4NT

£1,525 PCM

Located in a fantastic town centre position, this two double bedroom maisonette has been recently refurbished and has direct access to the garden. Further features include parking and garage.



Description

Located in a fantastic town centre position, this two double bedroom maisonette has been recently refurbished and is presented in excellent order throughout. The property comprises a good size lounge with wood effect laminate flooring, kitchen with appliances, recently fitted bathroom with shower and two double bedrooms. The property further features a secluded communal garden, parking, a garage and is only moments from Guildford mainline station.



Energy Efficiency Rating		Current	Potential
Very energy efficient - lower running costs			
(92 plus) A			
(81-91) B			
(69-80) C			
(55-68) D			
(39-54) E			
(21-38) F			
(1-20) G			
Not energy efficient - higher running costs			
England & Wales		70	77
	EU Directive 2002/91/EC		

Environmental Impact (CO ₂) Rating		Current	Potential
Very environmentally friendly - lower CO ₂ emissions			
(92 plus) A			
(81-91) B			
(69-80) C			
(55-68) D			
(39-54) E			
(21-38) F			
(1-20) G			
Not environmentally friendly - higher CO ₂ emissions			
England & Wales		71	80
	EU Directive 2002/91/EC		

