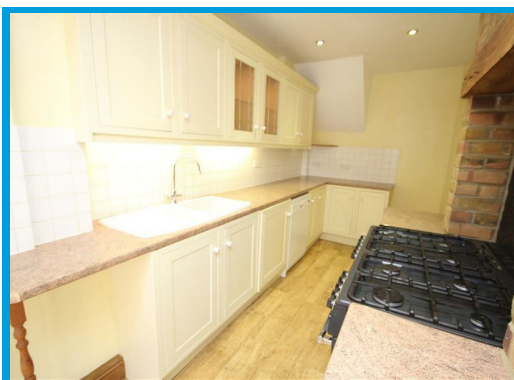




Oakfields, Guildford Surrey, GU3 3AT

£2,050 PCM

This stunning three bedroom property offers both spacious accommodation throughout and is in a fantastic location within easy reach of Surrey Research Park.



Description

This stunning three bedroom property offers both spacious accommodation throughout and a great location.

On the ground floor the property comprises an open reception room, large modern kitchen/ diner with appliances which leads onto the well maintained garden.

On the first floor the property further boasts a neutral bathroom suite equipped with power shower over bath. Two good sized double bedrooms both of which have built in wardrobes and also a further good size single.

The property also comes with a parking space and garage.

