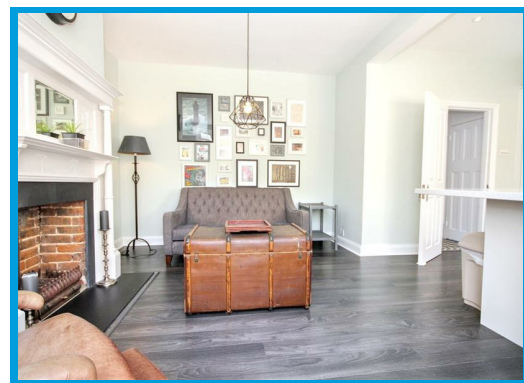


5 Weston Road, Guildford, GU2 8AU

£800 PCM

****ROOM TO LET**** Located within a short distance to Guildford town centre and the University of Surrey, This spacious four double bedroom house offers well presented accommodation throughout. ****BILLS INCLUDED****



Description

****AVAILABLE NOW**** Nestled on Weston Road in the charming town of Guildford, this delightful end terrace house offers a perfect blend of modern living and classic character.

Upon entering, you are welcomed into a spacious reception room/kitchen that serves as the heart of the home, ideal for both relaxation and entertaining. The property boasts a large double bedroom. The single bathroom is conveniently located, ensuring comfort and practicality for everyday living.

The modern design elements harmoniously complement the traditional features, creating a warm and inviting environment. The layout is designed to maximise natural light, enhancing the overall sense of space and openness.

Situated in a great location, this property benefits from easy access to local amenities, the university of surrey, and transport links, making it an ideal choice. The surrounding area offers a vibrant community atmosphere, with parks and recreational facilities nearby.

