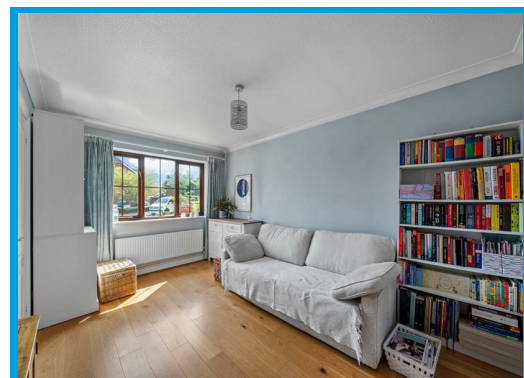
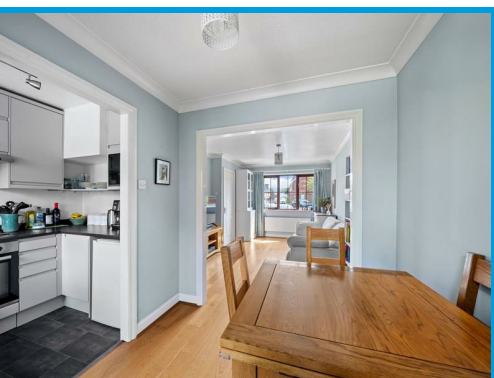




Little Manor Gardens, Cranleigh, GU6 8BF

Asking Price £375,000

Located at the end of a quiet residential cul de sac, this stunning two bedroom house boasts beautifully presented accommodation with the convenience of being only moments walk to Cranleigh village centre, shops, bars & restaurants.





# Description

Presented in excellent order throughout, this stunning two bedroom house is positioned at the end of a quiet residential de sac.

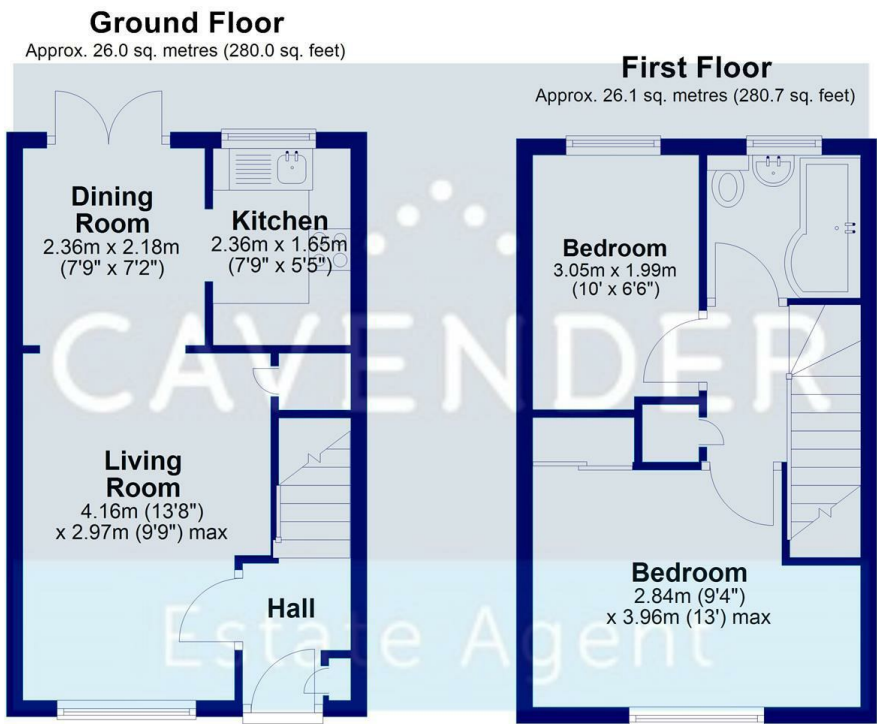
Conveniently positioned within moments walk to Cranleigh High Street, the ground floor accommodation comprises an entrance hall, a lounge with built in storage cupboard, a dining room with a half open plan modern kitchen. There is also a door leading directly to the private, fully enclosed garden.

On the first floor, the property boasts a master bedroom with double built in wardrobes, a further double bedroom and a bathroom with shower.

To the rear of the property is an easy to maintain, fully enclosed garden with a storage shed and gate providing rear access.

Further features include gas central heating, double glazing throughout and allocated parking.

Cranleigh is a popular, large village within less than 10 miles to Guildford. It boasts a range of shops, supermarkets, bars and restaurants



Total area: approx. 52.1 sq. metres (560.7 sq. feet)

