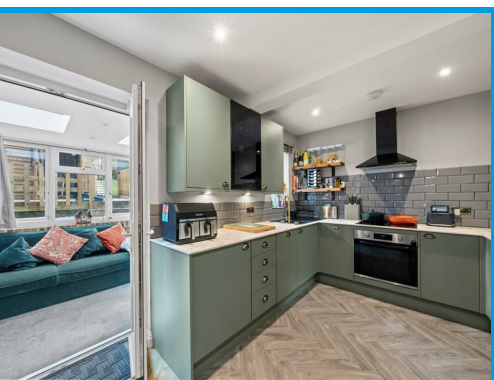




Vernon Way, Guildford, GU2 8DD

Guide Price £450,000

A beautifully refurbished home offering stylish, flexible living with a modern layout., extended reception room, a garden annex with kitchenette, a converted loft office, and luxurious finishes throughout.





# Description

A stunning home that has been completely refurbished to an exceptional standard, offering stylish, contemporary living in a sought-after area of Guildford. Upon entering, you step directly into the stylish living room filled with natural light and you are immediately struck by the quality and finish throughout. The ground floor flows effortlessly into a stunning, fully integrated kitchen, complete with sleek cabinetry, and modern worktops. A recent extension has created an impressive additional reception room, providing a versatile space that can be used as a second lounge, playroom or dining area. Conveniently positioned under the stairs is a beautifully designed modern cloakroom, providing a stylish and practical downstairs WC for guests and family alike.

Upstairs, the beautifully presented master bedroom is complemented by a luxurious walk-in wardrobe, offering ample storage space. The second bedroom is spacious and bright, ideal for children, guests, or additional workspace. The loft has been cleverly converted into a fully functional office, making it the perfect spot for working from home or for use as a creative studio. The modern family bathroom has been completely updated, featuring contemporary tiling, high-spec fixtures, and a sleek, minimalist design.

At the rear of the landscaped garden, a detached, self-contained annex has been thoughtfully built, complete with a kitchenette. This fantastic additional space offers endless possibilities — whether used for guest accommodation, a home business or a gym

Every aspect of this home has been carefully designed and finished with exceptional attention to detail, combining modern style with practical family living.

Situated within easy reach of Guildford's town centre, excellent local schools, green spaces, and mainline train services, this property offers the very best of modern family living in a prime Surrey location.

