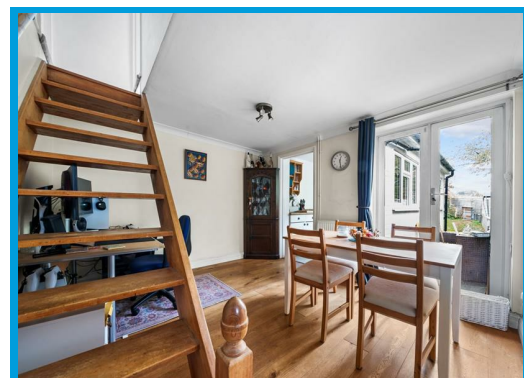
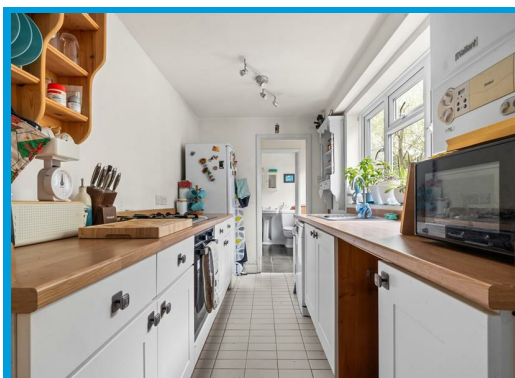




Worplesdon Road, Guildford, GU3 3LF

Guide Price £365,000

This charming semi-detached cottage located in the picturesque town of Guildford benefitting from prime location for easy access to Guildford and Woking.



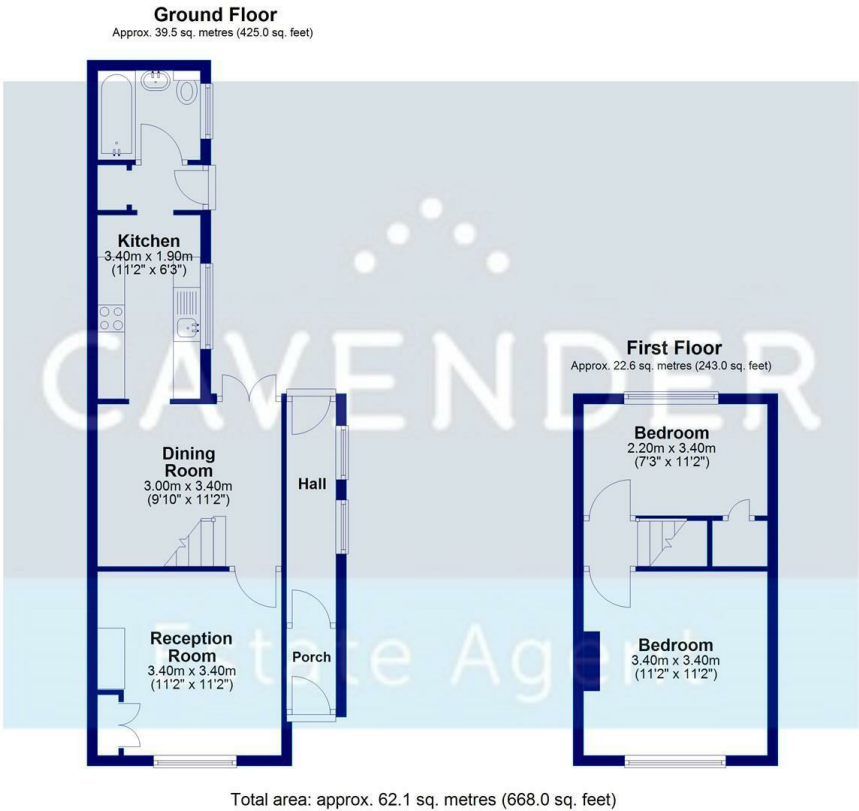


# Description

This charming semi-detached cottage located on Worplesdon Road in the picturesque town of Guildford. This delightful property boasts two cosy reception rooms, perfect for relaxing or entertaining guests. With two inviting bedrooms, there is ample space for a small family or guests to stay over. The property features a well-maintained bathroom, ensuring convenience and comfort for its residents.

This cottage exudes character and warmth, making it a truly inviting space to call home. The private garden offers a tranquil retreat, ideal for enjoying a morning coffee or hosting summer barbecues with loved ones.

Don't miss the opportunity to own this lovely semi-detached house with its unique charm and desirable features. Embrace the quintessential British lifestyle in this enchanting property on Worplesdon Road.



Energy Efficiency Rating		Current	Potential
Very energy efficient - lower running costs			
(92 plus) A			82
(81-91) B			
(69-80) C			
(55-68) D			40
(39-54) E			
(21-38) F			
(1-20) G			
Not energy efficient - higher running costs			
England & Wales		EU Directive 2002/91/EC	

Environmental Impact (CO <sub>2</sub> ) Rating		Current	Potential
Very environmentally friendly - lower CO <sub>2</sub> emissions			
(92 plus) A			
(81-91) B			
(69-80) C			
(55-68) D			
(39-54) E			
(21-38) F			
(1-20) G			
Not environmentally friendly - higher CO <sub>2</sub> emissions			
England & Wales		EU Directive 2002/91/EC	