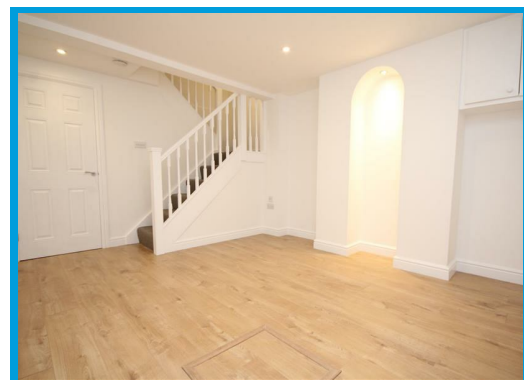




Queens Road, Guildford Surrey, GU1 4JJ

£2,350 PCM

Located in the heart of GUILDFORD TOWN CENTRE, this THREE DOUBLE BEDROOM house has been RECENTLY REFURBISHED throughout to a high specification and offers beautifully presented accommodation throughout.



Description

This stunning three double bedroom semi detached has been recently refurbished to an extremely high standard throughout.

The ground floor offers a hallway with access to the large reception room with feature fireplace, stairs leading to the fully tanked basement level as bedroom number three, modern kitchen/ dinner with appliances, separate utility room with access to the rear enclosed patio area and downstairs bathroom with separate shower cubicle.

The first floor offers two double bedrooms with the second benefiting from built in storage and modern shower room.

The property is located in the heart of Guildford town centre and has easy access to the A3 and transport links to London.

