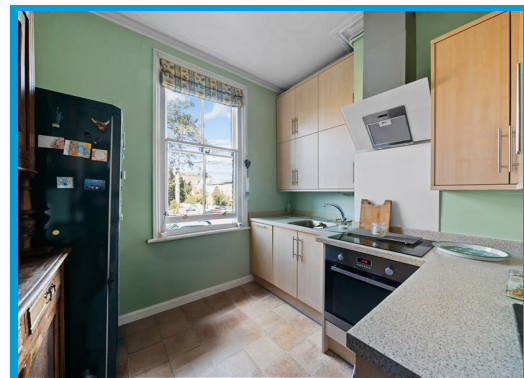
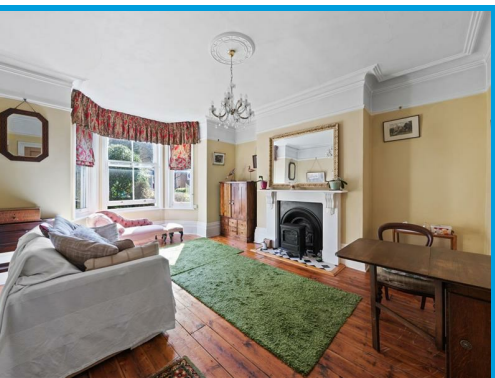




Epsom Road, Guildford, GU1 3LD

Guide Price £320,000

A spacious one bedroom character conversion apartment, located a short walk from the town centre and mainline station.
Offered with no onward chain.



Description

Situated in a sought-after location just moments from Guildford's vibrant town centre, this well-presented one-bedroom apartment offers contemporary living with convenience on your doorstep.

The property boasts a spacious and light-filled living area, complemented by a modern fitted kitchen. There is a generous double bedroom offering plenty pf space for storage and bathroom.

Located on Epsom Road, this apartment is within easy reach of Guildford's array of shops, restaurants, and cafés, as well as excellent transport links, including Guildford Station and direct access to the A3.

Ideal for first-time buyers, professionals, or investors, this property combines comfort, style, and a prime location. Offered with no onward chain.

