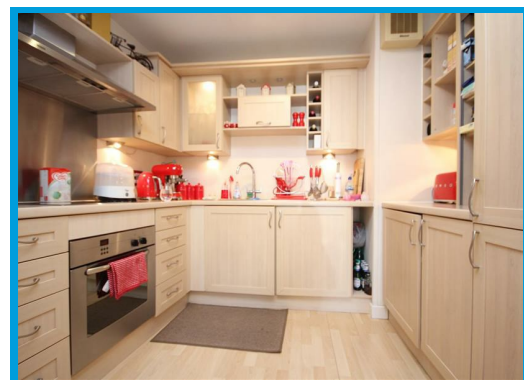




Chantry Place, Sydenham Road Guildford, Surrey GU1 3SF

£1,595 PCM

Located in the heart of the town centre, this beautifully presented two bedroom apartment is positioned in a well maintained building with secure underground parking.



Description

Situated in the sought-after Guildford development, is this contemporary two-bedroom apartment offering stylish living in a prime central location. Perfect for professionals or couples, this well-presented home is just a short walk from Guildford High Street, transport links, and local amenities. The property comprised a modern open plan living room providing plenty of natural light and a contemporary kitchen with integrated appliances. Both bedroom are generously sized with the master bedroom benefiting from built in wardrobes and a sleek bathroom suite with overhead shower. With allocated parking and gated entry. This property is available beginning of May, furnished or unfurnished.



Energy Efficiency Rating		
	Current	Potential
Very energy efficient - lower running costs		
(92 plus) A		
(81-91) B		
(69-80) C		
(55-68) D		
(39-54) E		
(21-38) F		
1-10 G		
Not energy efficient - higher running costs		
England & Wales	EU Directive 2002/91/EC	

Environmental Impact (CO ₂) Rating		
	Current	Potential
Very environmentally friendly - lower CO ₂ emissions		
(92 plus) A		
(81-91) B		
(69-80) C		
(55-68) D		
(39-54) E		
(21-38) F		
1-10 G		
Not environmentally friendly - higher CO ₂ emissions		
England & Wales	EU Directive 2002/91/EC	

