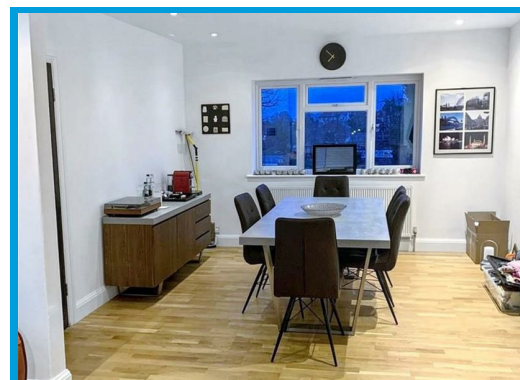
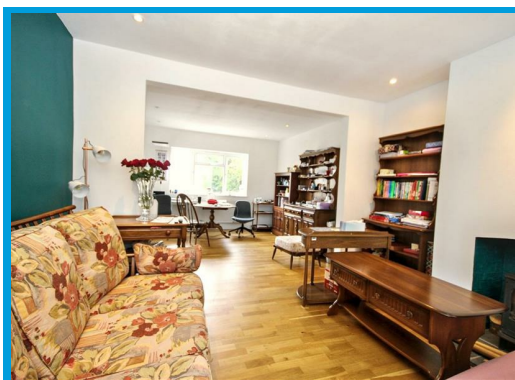
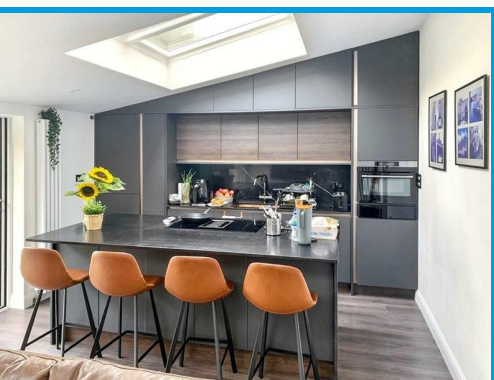




Pewley Way, Guildford, GU1 3PX

£3,600 PCM

****GET A £100 VOUCHER OF YOUR CHOICE WHEN YOU RENT THIS PROPERTY THROUGH CAVENDERS**** A stylish and modern three-bedroom semi-detached home in the sought-after Pewley Way, Guildford, featuring a spacious living room, separate open-plan kitchen/diner, chic bathrooms, and excellent access to transport, schools, and green spaces.



Description

Situated in the sought-after Pewley Way, this beautifully presented three-bedroom semi-detached home offers modern living in a prime Guildford location. Boasting a stylish and contemporary finish throughout, this property is perfect for those seeking both comfort and sophistication.

The large living room is a bright and welcoming space, perfect for relaxation, while the stunning open-plan kitchen and dining area, situated on a separate level, provides a sleek and social hub for entertaining. Finished to a high standard, the kitchen features modern fittings, ample storage, and a spacious dining area with plenty of natural light.

Upstairs, the property continues to impress with three well-proportioned bedrooms. The principal bedroom benefits from a luxurious en-suite, complementing the beautifully designed, chic family bathroom making this the perfect property for professionals or families,

Within catchment area of some of the areas most highly sought after schools and walking distance to Guildford train station and close proximity to Guildford town centre which offers a wide variety of shops, restaurants and leisure facilities

