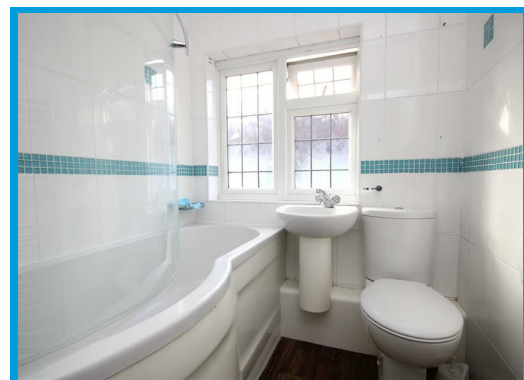




Woodlands Road, Guildford, Surrey GU1 1RW

£2,250 PCM

**\*\*GET A £100 VOUCHER OF YOUR CHOICE WHEN YOU RENT THIS PROPERTY THROUGH CAVENDERS\*\*** A three bedroom semi detached house with off street parking located in a popular residential area with good links to Guildford town centre.



# Description

This beautifully presented semi detached house is located in a popular residential area. To the front a of the property is a bright lounge with bay window and Log burner fire, a modern fitted kitchen and separate dining room with sliding doors to the garden. Upstairs boasts two double bedrooms, a further bedroom and a modern family bathroom. Further benefits include a large private rear garden and off street parking for up to three cars.

