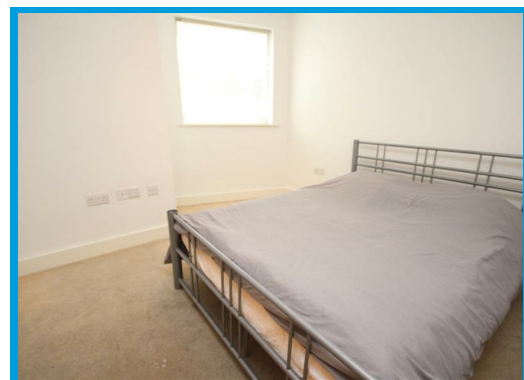




Metro, Walnut Tree Close Guildford, Surrey GU1 4SF

£1,650 PCM

Located in Guildford town centre, this stunning two bedroom apartment offers modern & well presented accommodation within moments of the mainline station.



Description

Located in Guildford town centre, this stunning two bedroom apartment offers modern & well presented accommodation throughout within moments of the mainline station.

The property is accessed via secure phone entry system and comprises a hallway leading to a light & airy lounge with doors to the balcony, an open plan kitchen with appliances, a double bedroom with built in wardrobes, a further bedroom and a bathroom with shower.

Further features include built in storage cupboards and wood flooring throughout the hall and lounge.



Energy Efficiency Rating		
	Current	Potential
Very energy efficient - lower running costs		
(92 plus) A		
(81-91) B		
(69-80) C		
(55-68) D		
(39-54) E		
(21-38) F		
(1-20) G		
Not energy efficient - higher running costs		
England & Wales	EU Directive 2002/91/EC	

Environmental Impact (CO ₂) Rating		
	Current	Potential
Very environmentally friendly - lower CO ₂ emissions		
(92 plus) A		
(81-91) B		
(69-80) C		
(55-68) D		
(39-54) E		
(21-38) F		
(1-20) G		
Not environmentally friendly - higher CO ₂ emissions		
England & Wales	EU Directive 2002/91/EC	