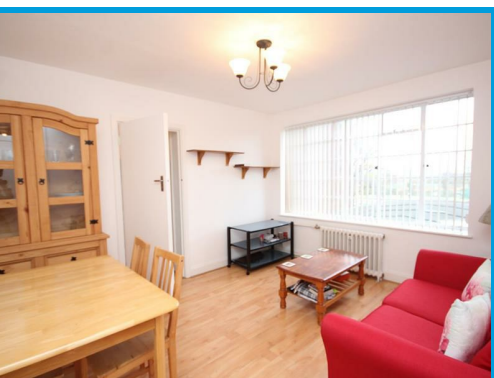




Eastgate House, 223 High Street Guildford, Surrey GU1 3BY

£1,450 PCM

Located in the heart of the town centre on Guildford High Street, this beautifully presented two double bedroom apartment is positioned within the development to ensure quiet yet very convenient living



Description

Located in the heart of the town centre on Guildford High Street, this beautifully presented two double bedroom apartment is positioned within the development to ensure quiet yet convenient living.

The property is accessed via secure phone entry system and comprises an entrance hall leading to a light and airy lounge, modern kitchen with appliances, two double bedrooms and a bathroom with shower.

