

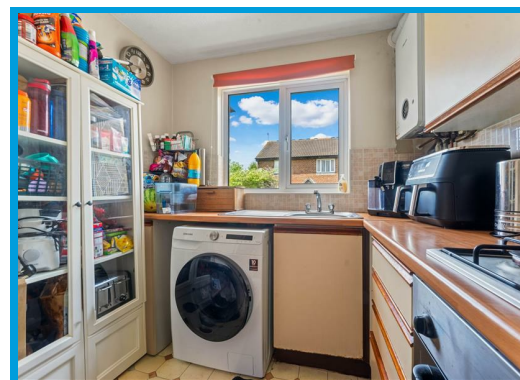
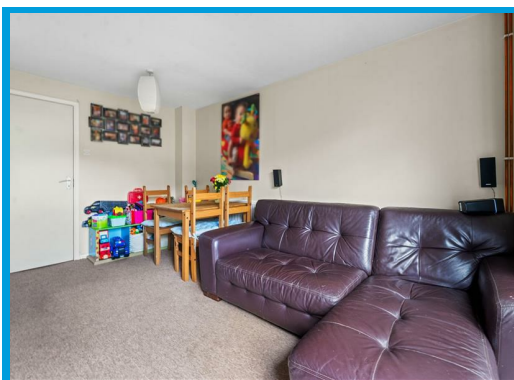


Colburn Crescent, Guildford, GU4 7YZ

Offers In Excess Of £385,000

**\*\*NO ONWARD CHAIN\*\***

Beautifully presented two double bedroom house in a quiet sought after cul de sac location close to excellent schools and local amenities.





# Description

**\*\*NO CHAIN\*\***

This beautifully presented two bedroom house is positioned in a quiet sought after cul de sac location close to excellent schools and local amenities.

Downstairs, the property compromises a large living/dining room and a bright and airy kitchen.

Upstairs, the property has a bathroom with a shower over the bath and two double, equally-sized bedrooms.

The property further offers ample parking and a good size private low maintenance rear garden.

There is a garage in a nearby block with local shops, supermarkets and restaurants are only moments away with the A3 and town centre within easy access.

