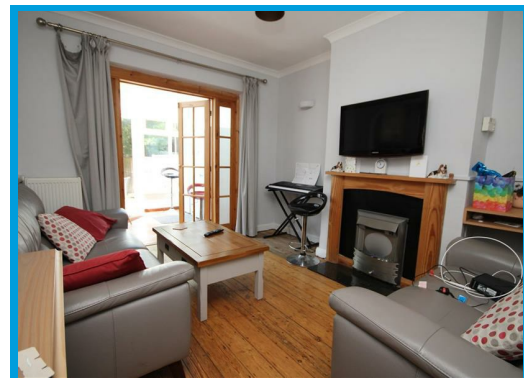
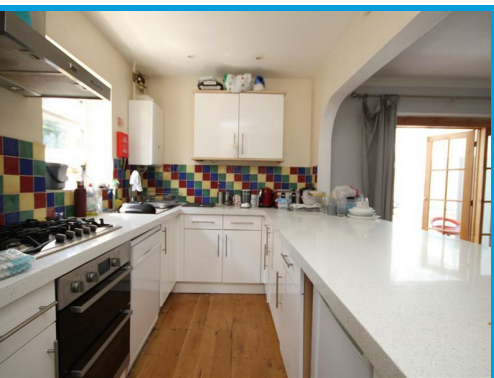




Beech Grove, Guildford, GU2 7UZ

£2,900 PCM

****STUDENT ACCOMODATION**** A spacious and well presented four bedroom house arranged over three floors and located close to Surrey University and within easy access to Guildford town centre and mainline station.



Description

Arranged over three floors, this spacious four bedroom house offers well presented accommodation within moments of Surrey University and within easy access of Guildford town centre and mainline station.

On the ground floor, the property comprises an entrance hall, a double bedroom, a modern open plan kitchen, a lounge and a conservatory leading to the rear garden.

On the first floor there are two double bedrooms, a further bedroom and a family bathroom with separate shower cubicle.

On the top floor there is a double bedroom, a dressing room/ office and an ensuite shower room.

To the rear of the property there is a good size and easy to maintain mature garden offering a secluded and private outdoor space.

Further features include off street parking and a garage with Tesco superstore only a few minutes walk away.

