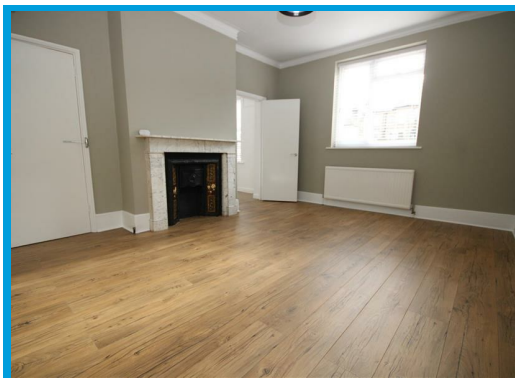
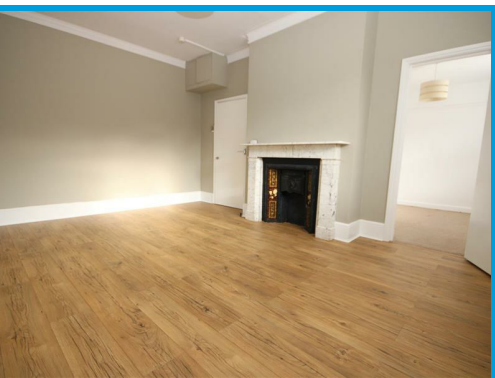




Epsom Road, Guildford, GU1 3LA

£1,400 PCM

Located moments from Guildford High Street and presented in excellent order throughout, this stunning one bedroom apartment boasts spacious and characterful accommodation throughout with an allocated parking space.



Description

Having been redecorated throughout, this beautiful one bedroom apartment boasts spacious accommodation within a stones throw to Guildford High Street and the array of shops, restaurants and bars it has to offer.

The property comprises a large lounge with feature fireplace, a double bedroom, kitchen with appliances and a bathroom with shower.

The property further features character features such as high ceilings and is light and airy throughout with an abundance of natural light.

There is an allocated parking space and a local supermarket within a very short walk.

