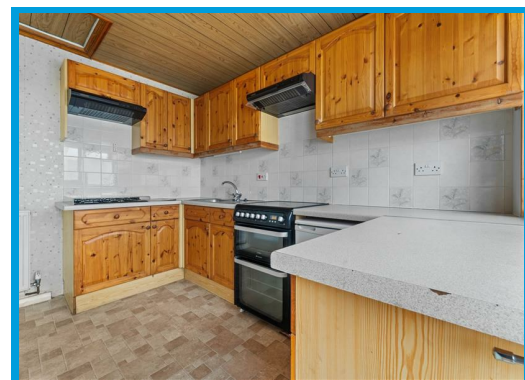
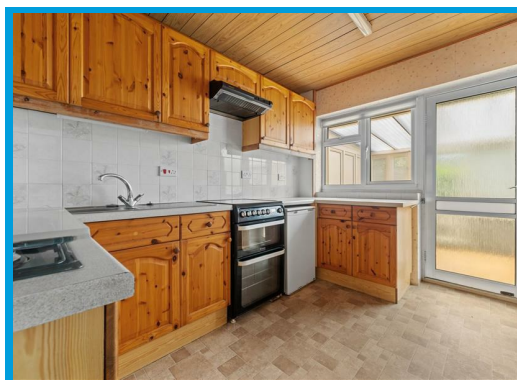




Dorrit Crescent, Guildford, Surrey GU3 3AL

Offers In Excess Of £460,000

**\*\*NO CHAIN\*\*** Located in a particularly quiet crescent in a popular residential area, this spacious three bedroom bungalow is well positioned close to local shops and is on a generous plot with ample off street parking & garage.



# Description

**\*\* NO CHAIN\*\*** Positioned on a generous plot within a quiet residential cul de sac, this three bedroom bungalow is within a short walk to local shops and within easy access to Guildford town centre and main bus routes.

The property comprises an entrance hall which leads to a double aspect lounge/ dining room overlooking the rear garden, a kitchen which then leads to the conservatory and a bathroom with shower. There is also a large master bedroom with built in wardrobes, a further second double bedroom, a large single bedroom.

Outside, the property has a good size rear garden with a large patio as well as a garden room. There is also ample off street parking for several cars and a garage. The property is also suitable for an extension or a loft conversion STP.

