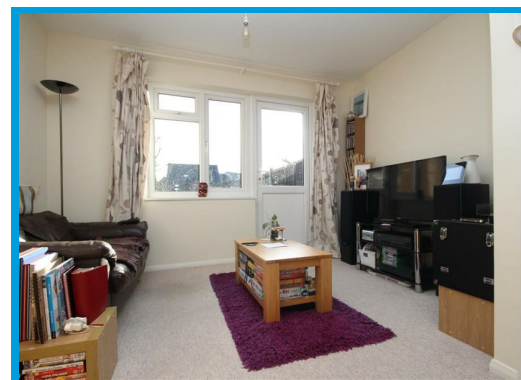




Elder Close, Burpham Guildford, Surrey GU4 7YW

£1,600 PCM

Having been recently refurbished throughout, this two double bedroom house is positioned in a quiet residential cul de sac within the catchment of top local schools and within easy access of Guildford town centre.



Description

A spacious two bedroom terraced house is positioned at the end of a quiet cul de sac in the popular location of Burpham.

On the ground floor the property comprises of a entrance hall leading to the reception room which has direct access to the private enclosed rear garden. Also located on the ground floor is the recently fitted modern kitchen with appliances.

Upstairs the property has two double bedrooms and a family bathroom with shower over bath.

The property further features on street parking, a private enclosed rear garden and a garage.



Energy Efficiency Rating		Current	Potential
Very energy efficient - lower running costs			
(92 plus) A			
(81-91) B			
(69-80) C			
(55-68) D			
(39-54) E			
(21-38) F			
(1-20) G			
Not energy efficient - higher running costs			
England & Wales		68	85
EU Directive 2002/91/EC			

Environmental Impact (CO ₂) Rating		Current	Potential
Very environmentally friendly - lower CO ₂ emissions			
(92 plus) A			
(81-91) B			
(69-80) C			
(55-68) D			
(39-54) E			
(21-38) F			
(1-20) G			
Not environmentally friendly - higher CO ₂ emissions			
England & Wales			
EU Directive 2002/91/EC			

